



## 2 Hammersley Road Bell Park VIC

3 1 2

A fantastic opportunity to purchase a home in this increasingly popular suburb that is Bell Park, located close to schools, shops and sporting reserves. This lovely home has recently been updated and is ready for you to move in and enjoy. Features include three bedrooms, a large lounge, central kitchen, and bathroom with separate toilet. The good sized backyard is the perfect place for children and pets to play, low maintenance garden but enough to keep your hand in, large entertaining area ideal for when family and friends visit, plenty of garaging/shedding and off street parking. Ideal first home or investment.

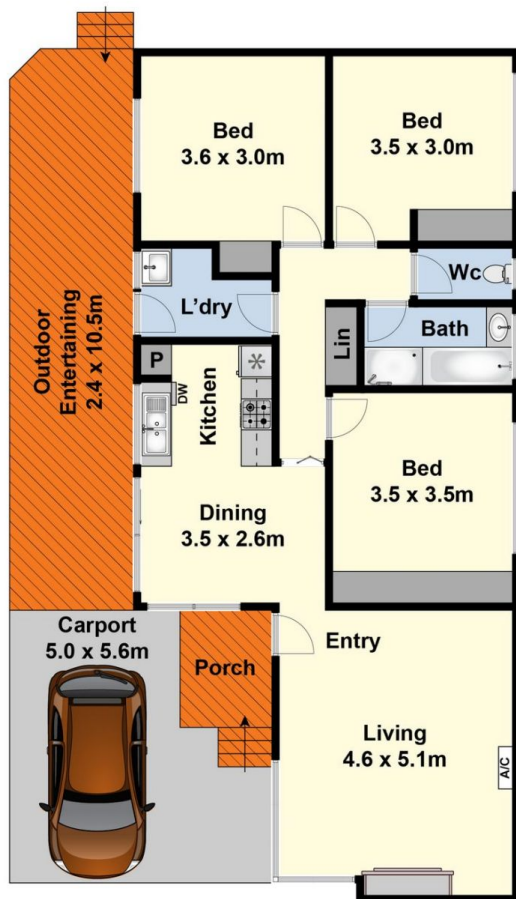
**Type** : House  
**Land Size** : 560 sqm  
**View** : <https://www.maxwellcollins.com.au/sale/vic/geelong-district/bell-park/residential/house/7457351>



**Duncan Skene**  
03 5222 4711



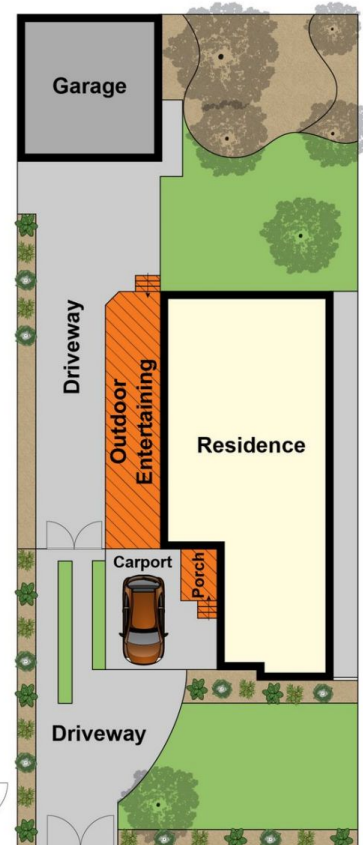
**Eugene Carroll**  
03 5222 4711



Ground Floor



(Not In Position)



Site Plan