



## 2 Clydesdale Crescent Belmont VIC

5 2 1

Boasting a peaceful position and an abundant allotment of 650m2 approx, this quality 5-bedroom home is a family's dream. A mature garden decorates the front of the home, presenting an appealing frontage to the street. From the entrance you are greeted by light and airy lounge with a gas log fire. The kitchen is well equipped and conveniently located between 2 dining/meals rooms. The master bedroom is of grand proportions and has a stunning ensuite with shower, toilet, vanity, and stunning free-standing bath, generous dressing room/WIR and to top it off there is also a separate retreat room featuring a further gas log fire. Three of the other bedrooms have BIRs and the fifth also has a large WIR and could also be used as a home office. The bedrooms are serviced by a beautiful family bathroom with a shower, and separate toilet room.

**Type** : House  
**Land Size** : 650 sqm  
**View** : <https://www.maxwellcollins.com.au/sale/vic/geelong-district/belmont/residential/house/7457327>

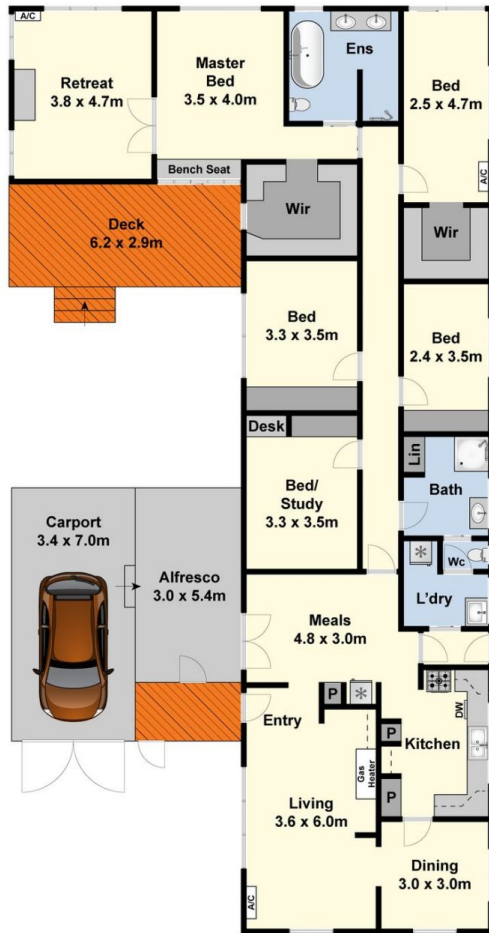


**Duncan Skene**  
03 5222 4711

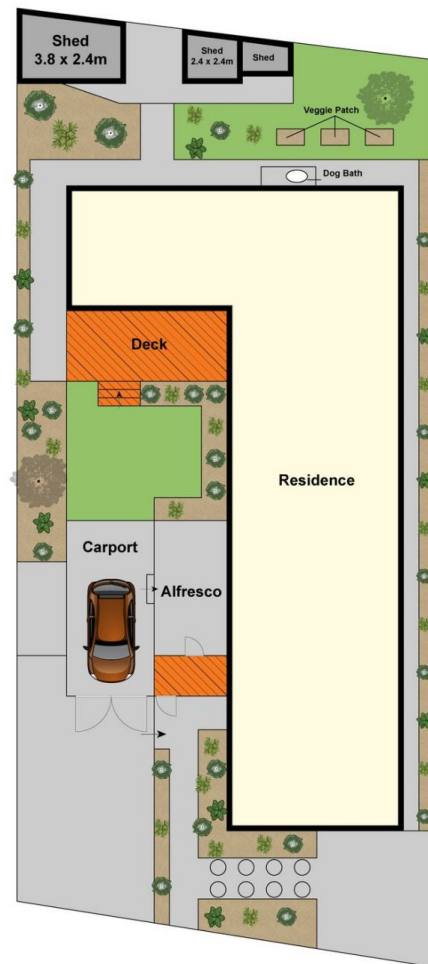


**Laura Vander Noord**  
03 5222 4711

[For full version visit the website](https://www.maxwellcollins.com.au)



Ground Floor



Site Plan