



## 1 Illouera Avenue Grovedale VIC

4 2 2

This well-presented home provides first home buyers, investors and young families an exciting opportunity to secure a brick veneer home in fantastic condition. Situated on 577sqm (approx.) of land on a corner block, this home boasts a convenient lifestyle in an increasingly popular pocket of Grovedale.

Featuring a spacious and light filled lounge/dining area with split system air-conditioning and gas heating, a functional size kitchen with slate flooring, gas cooking, dishwasher and an adjacent second living space, a large main bedroom with built-in robes and ensuite, while a further three bedrooms also include built-in robes, a central bathroom with separate toilet plus a double lock-up garage. Outside features an undercover area which is perfect for

**Type** : House  
**Price** : \$ 690,000  
**Land Size** : 577 sqm  
**View** : <https://www.maxwellcollins.com.au/sale/vic/geelong-district/grovedale/residential/house/7457283>

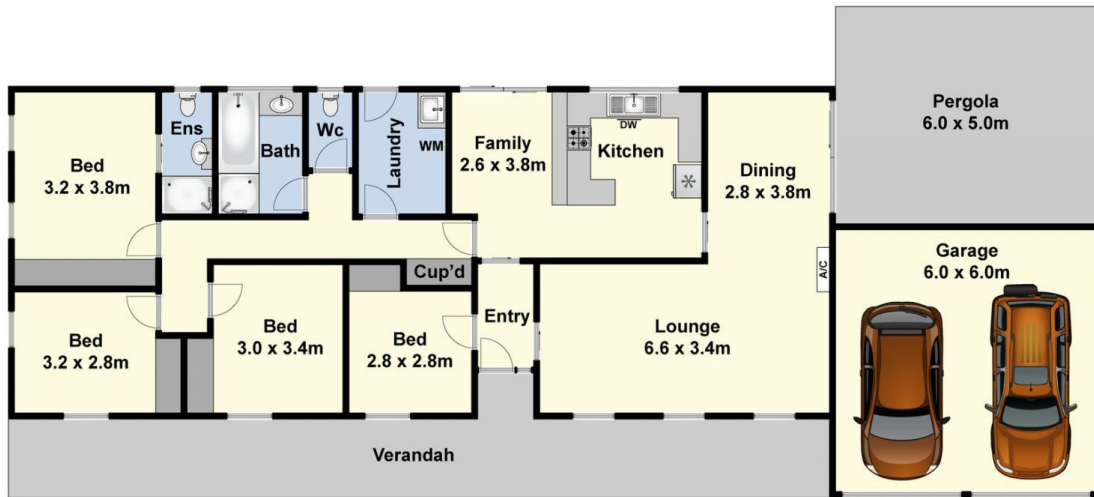
[For full version visit the website](https://www.maxwellcollins.com.au)



**Shaun Carroll**  
03 5222 4711



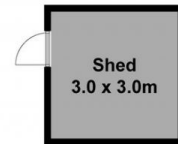
**Eugene Carroll**  
03 5222 4711



Ground Floor



Site Plan



(Not In Position)