

8 Wyong Court Grovedale VIC

3 1 1

This home presents an exciting opportunity to secure an affordable home in the heart of Grovedale. The home is well presented and ideal for anyone looking for a family home or sound investment. Conveniently located close to the popular Waurin Ponds Shopping Centre, local schools, parks, train stations, Deakin University, Epworth Hospital and the Ring Road. Consisting of 3 bedrooms, large lounge, central kitchen/dining, family bathroom with separate toilet and laundry. Outside features an oversized drive through single garage, a sizeable backyard for the children and pets to play and low maintenance garden but enough to keep your hand in. This is one to act on quickly.

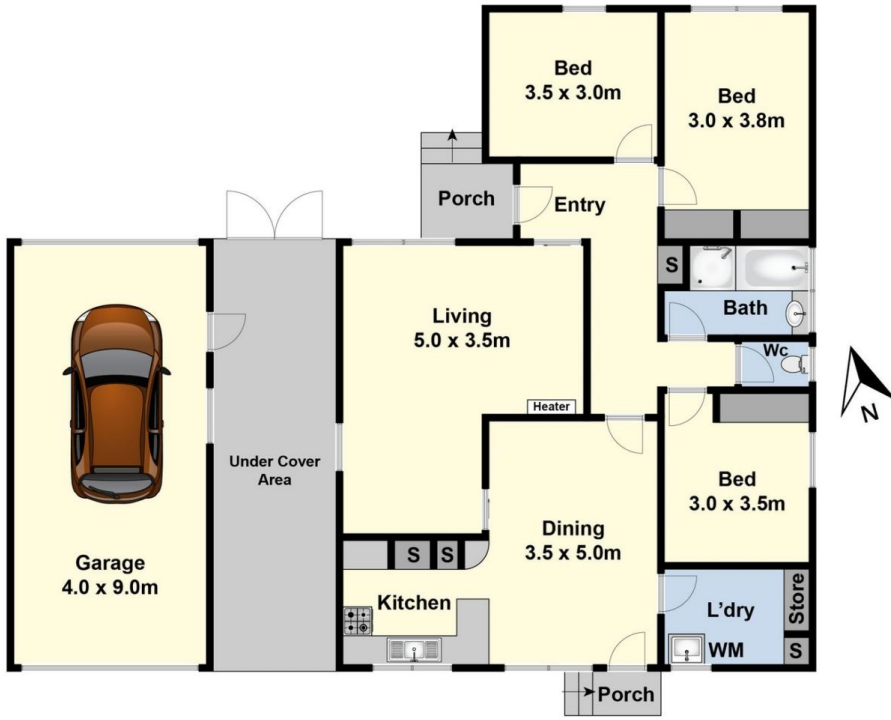
Type : House

Price : \$ 648,000

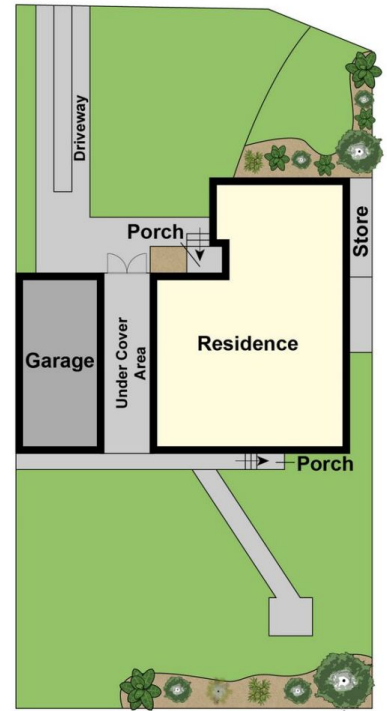
View : <https://www.maxwellcollins.com.au/sale/vic/geelong-district/grovedale/residential/house/7457267>



Duncan Skene
03 5222 4711



Ground Floor



Site Plan