



## 5 Basford Court Marshall VIC

4 2 2

This spacious & well-presented brick veneer home boasts light filled living throughout. Situated close to Marshall train station, schools and shops, it's the perfect family home, also ideally suiting first home buyers, investors and downsizers. Featuring a neutral palette with generous open planned living this 4 bedroom, 2 living home creates an inviting space for everyone. Master bedroom is generous with WIR and contemporary ensuite, the other 3 bedrooms feature BIR's and are serviced by the family bathroom. Other features include double garage with internal access, ducted heating, private rear yard which is low maintenance but enough to keep your hand in. Currently returning \$490 per week, this home is available now for occupation or investment. Don't miss it!

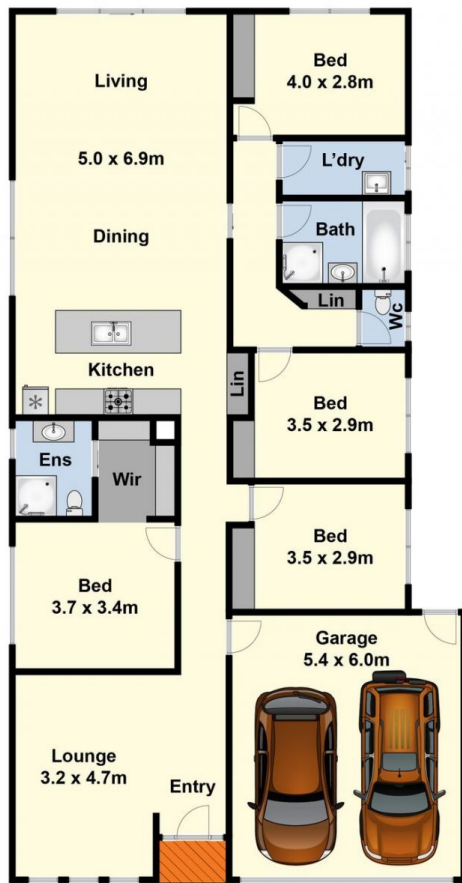
**Type** : House  
**Price** : \$ 595,000  
**View** : <https://www.maxwellcollins.com.au/sale/vic/geelong-district/marshall/residential/house/7457218>



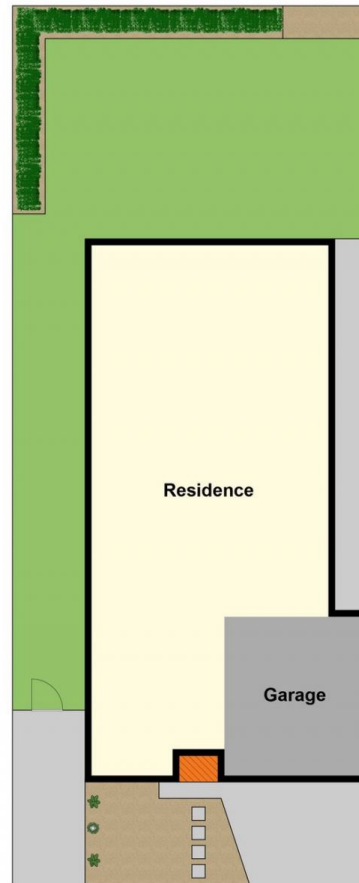
**Laura Vander Noord**  
03 5222 4711



**Duncan Skene**  
03 5222 4711



Ground Floor



Site Plan