



7 Midas Court Whittington VIC

3 1

This well-presented home gives a fantastic opportunity for first home buyers and investors wanting to secure an entry level home into the market with room for improvement. Situated on a substantial land size of 650sqm (approx.). Featuring 3 bedrooms all with built in robes, spacious lounge, central kitchen that overlooks the large back yard, and main family bathroom. Outside features plenty of off street parking, low maintenance garden but enough to keep your hand in and the big backyard is ideal for kids and pets to play. With handy positioning to local schools, Gordon TAFE, Newcomb Shopping Centres and only a short drive into the Geelong CBD. Take advantage of this exciting opportunity today.

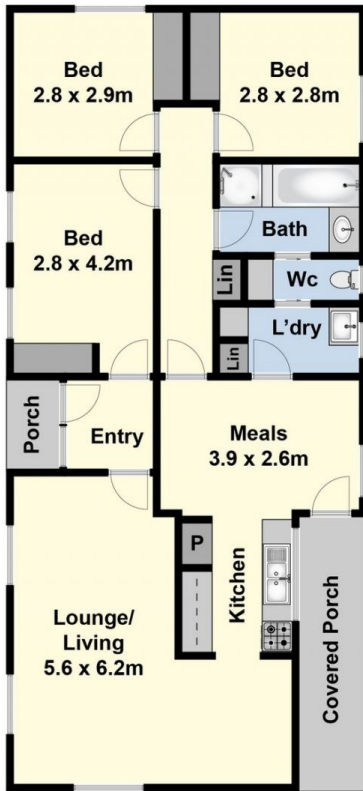
Type : House
Price : \$ 438,000
Land Size : 650 sqm
View : <https://www.maxwellcollins.com.au/sale/vic/geelong-district/whittington/residential/house/7457136>



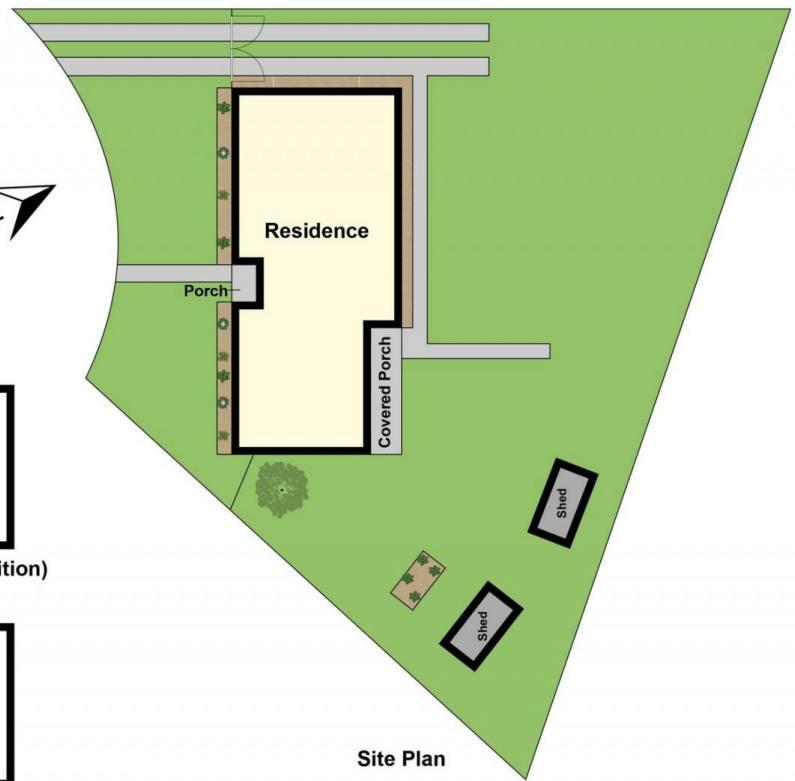
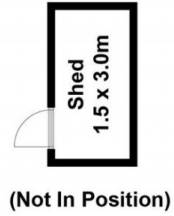
Duncan Skene
03 5222 4711



Laura Vander Noord
03 5222 4711



Ground Floor



Site Plan