



11 Alouette Court Whittington VIC

3 1 2

This three-bedroom brick veneer home presents exceptional value and is ideal for first home buyers and investors looking for an affordable home with room for improvement. Boasting a sizable 647sqm (approx.) of land in a quiet court location, it's the perfect opportunity to break into the property market!

Featuring a lounge with gas wall furnace and split-system air conditioning, kitchen with gas upright oven, dishwasher and adjacent meals area, bathroom with shower and separate bath and three bedrooms all with built-in robes. Outside features a fantastic size backyard which is ideal for the kids to play and a double lockup garage with auto door.

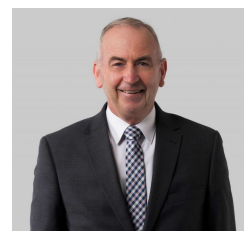
With walking distance to Whittington primary school,

[For full version visit the website](https://www.maxwellcollins.com.au)

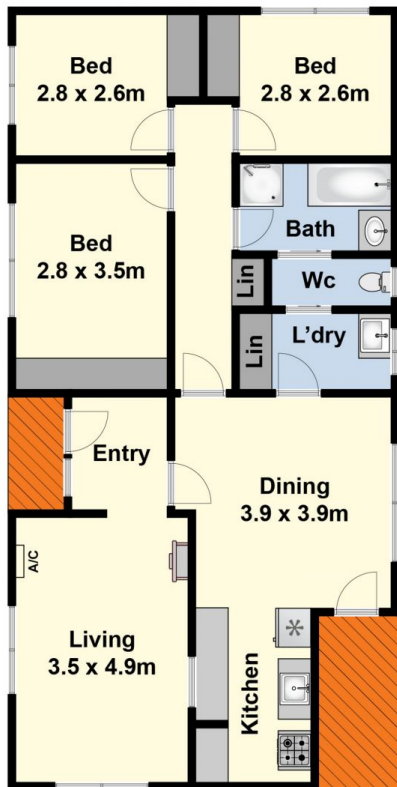
Type : House
Price : \$ 425,000
Land Size : 647 sqm
View : <https://www.maxwellcollins.com.au/sale/vic/geelong-district/whittington/residential/house/7457084>



Shaun Carroll
03 5222 4711



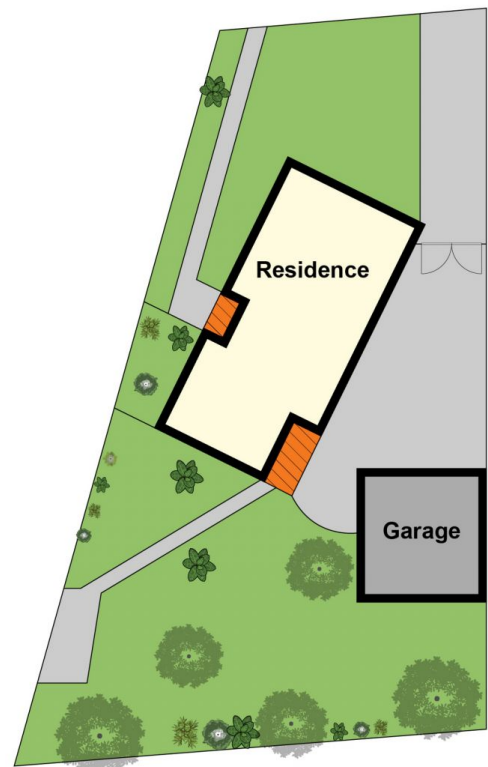
Eugene Carroll
03 5222 4711



Ground Floor



(Not In Position)



Site Plan