



12/31 Meadowvale Drive Grovedale VIC

2 1 1

This is an ideal low maintenance property that is securely leased until August 2021 and currently returning approx. 4.5% (gross) per annum. Decorated in neutral tones this well cared for two bedroom townhouse is a great entry level prospect for both investors, or first home buyers looking to enter the market. The well appointed kitchen overlooks the meals/living area with a sliding door to the North that opens to a sunny deck and easy care courtyard. Complete with R/C air conditioner and central heating this compact, yet spacious home has lots of appeal. The perfect addition to your investment portfolio it is in a most desirable location close to the Waurn Ponds Shopping Centre, Deakin University, Epworth Hospital and within easy reach of the Ring Road. Call today to arrange your inspection.

Type : Unit

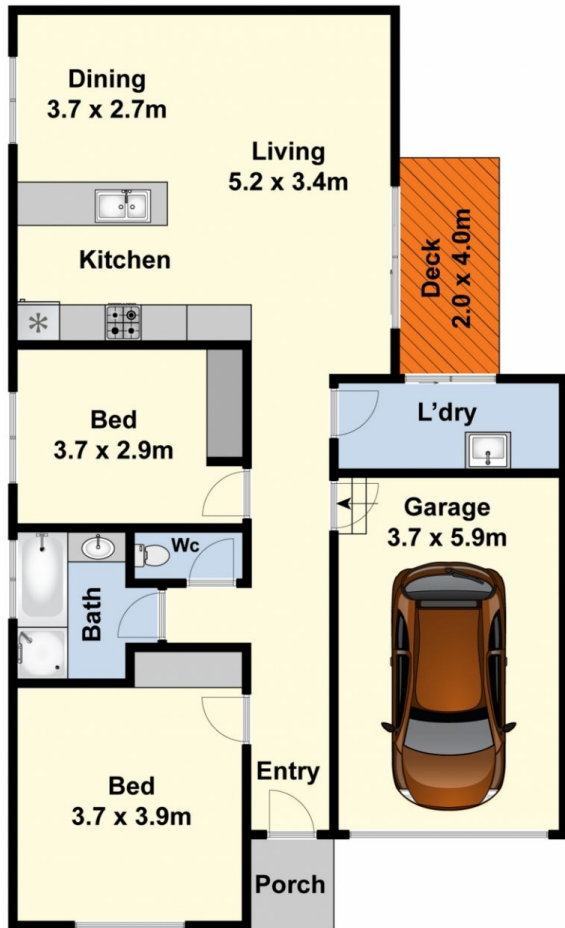
View : <https://www.maxwellcollins.com.au/sale/vic/geelong-district/grovedale/residential/unit/7456974>



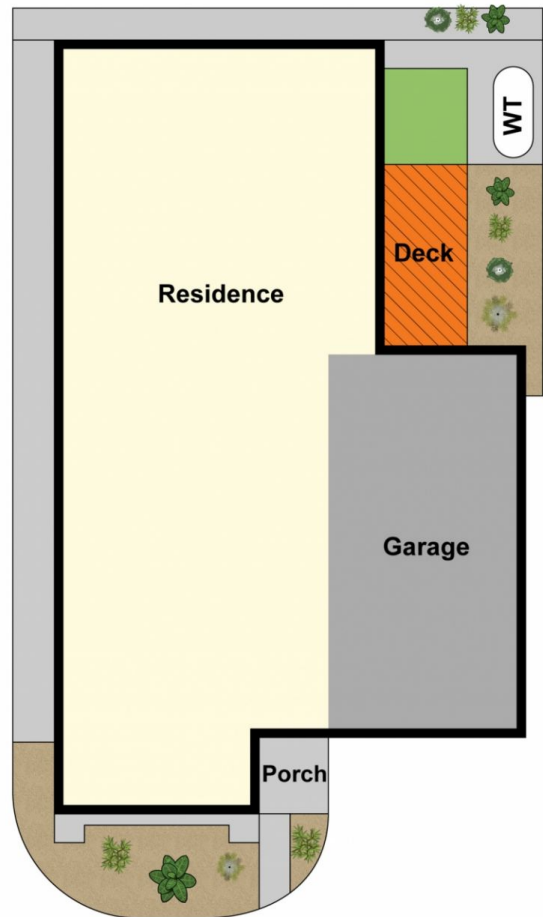
Lois Wilson
03 5222 4711



Nick Lord
03 5222 4711



Ground Floor



Site Plan