



258 Latrobe Terrace Newtown VIC

4 1 8

This highly visible property is located on the cusp of the Geelong professional services and medical precincts and is less than a 2 min drive into the Geelong CBD, railway station and the waterfront.

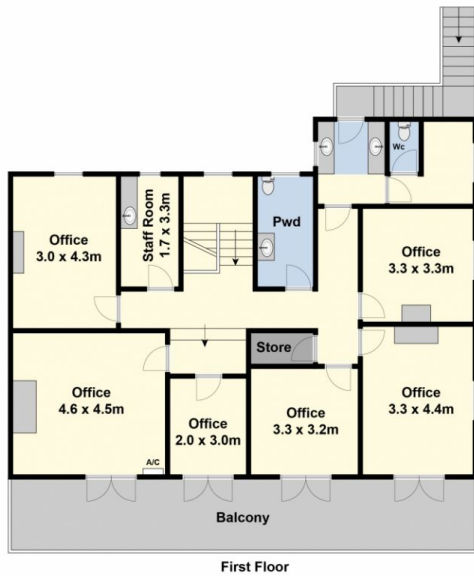
The improvement to the land includes a solid two storey heritage property currently utilized as an office by a legal firm but will be sold with vacant possession. The building consists of reception, at least 8 offices, store room, kitchen (2) and amenities. Internal and external stairs lead to access the second level with flexibility to separate the property into multiple tenancies. An asphalted area at the rear of the property can accommodate at least 8 car parks and is accessed from Skene Street or side right of way lane. The property is in need of a cosmetic update and when done would provide a well presented property with

Type : House
Price : \$ 975,000
Building Size : 300 sqm
Land Size : 542 sqm
View : <https://www.maxwellcollins.com.au/sale/vic/geelong-district/newtown/residential/house/7456963>

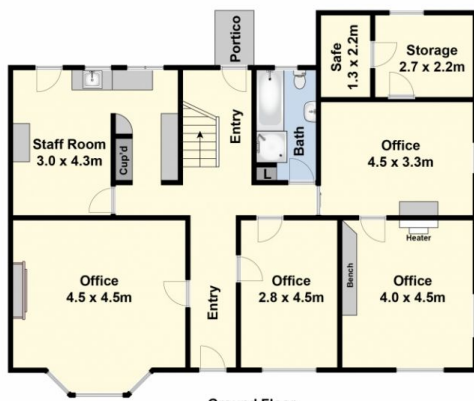
[For full version visit the website](https://www.maxwellcollins.com.au)



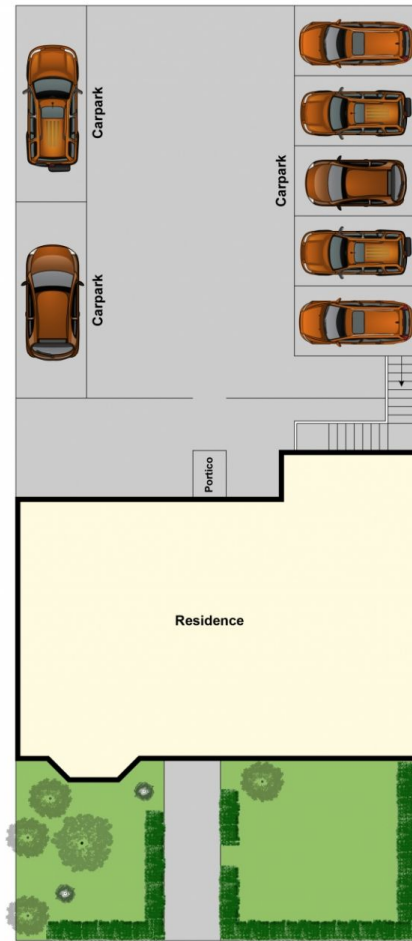
Nick Lord
03 5222 4744



First Floor



Ground Floor



Site Plan