



30B Southdown Crescent Belmont VIC

3 1 1

This well presented three-bedroom home is located in a highly desirable pocket of Belmont and is ideal for first home buyers and investors. Boasting low maintenance and convenient living, it's the perfect entry level home into a proven growth suburb.

Featuring a light filled and spacious lounge/dining area with split system air-conditioning, a fully equipped kitchen complete with gas cook-top/oven and dishwasher, three bedrooms all with built-in robes and a bathroom with both shower and bath. Outside features a timber decked area which is fantastic for entertaining, a low maintenance and private courtyard plus a single remote-controlled garage.

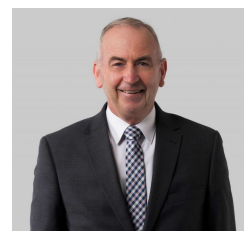
Close to local playgrounds, walking tracks, parklands and

[For full version visit the website](https://www.maxwellcollins.com.au)

Type : Unit
Price : \$ 495,000
Land Size : 287 sqm
View : <https://www.maxwellcollins.com.au/sale/vic/geelong-district/belmont/residential/unit/7456961>



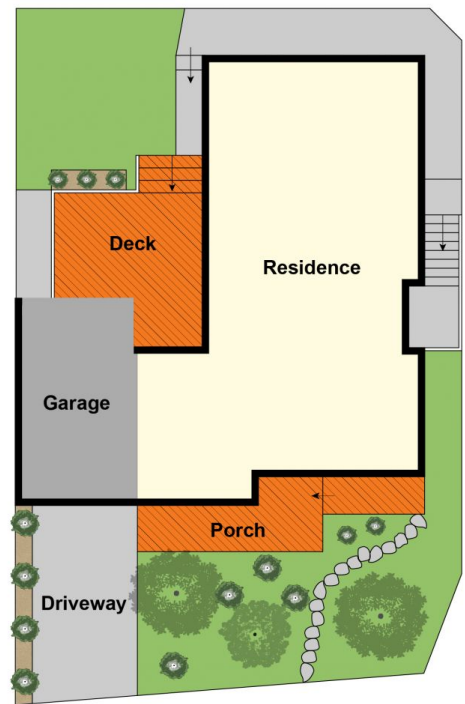
Shaun Carroll
03 5222 4711



Eugene Carroll
03 5222 4711



Ground Floor



Site Plan