



1/66 Regent Street Whittington VIC

2 1 1

This large brick veneer unit is well presented, on a spacious corner site and boasts fantastic convenience to local shopping centres. Ideally suiting first home buyers, investors and downsizers, it is rare to have a unit of this size!

Featuring two bedrooms both with built-in robes, a generous size living/dining area with gas wall furnace, split-system air conditioning and large windows letting in plenty of natural light, a timber kitchen with new freestanding oven with electric cook-top, bathroom with shower, bath and separate toilet. Outside features a large and private backyard, complete with a covered outdoor area, tool shed, veggie patch and access to a single lockup garage.

[For full version visit the website](https://www.maxwellcollins.com.au)

Type : Unit
Land Size : 364 sqm
View : <https://www.maxwellcollins.com.au/sale/vic/geelong-district/whittington/residential/unit/7456951>



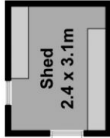
Shaun Carroll
03 5222 4711



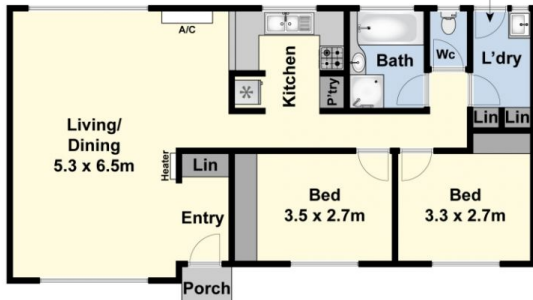
Eugene Carroll
03 5222 4711



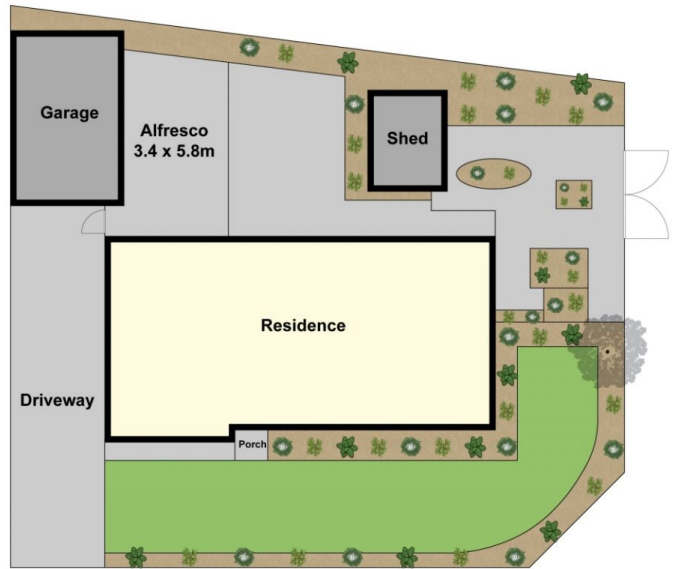
(Not In Position)



(Not In Position)



Ground Floor



Site Plan