



5 Cosmos Court Whittington VIC

4 1 1

This neatly presented home boasts spacious rooms throughout and is a fantastic opportunity for a growing family or investor looking to secure an affordable home. Situated on an impressive 690sqm (approx.), it's only a short drive to the Newcomb Shopping Centre and a host of convenient amenities.

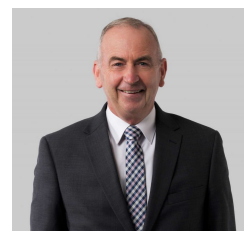
The home features beautiful slate flooring, four generous size bedrooms, three with built-in robes, ceiling fans throughout, a lounge-dining area with large windows letting in an abundance of natural light complete with a cosy gas log fire and split-system air-conditioning, a functional timber kitchen with 5 burner gas cook-top and stunning 40mm stone bench tops which provide plenty of space for lovers of cooking, central bathroom with large timber vanity,

[For full version visit the website](https://www.maxwellcollins.com.au)

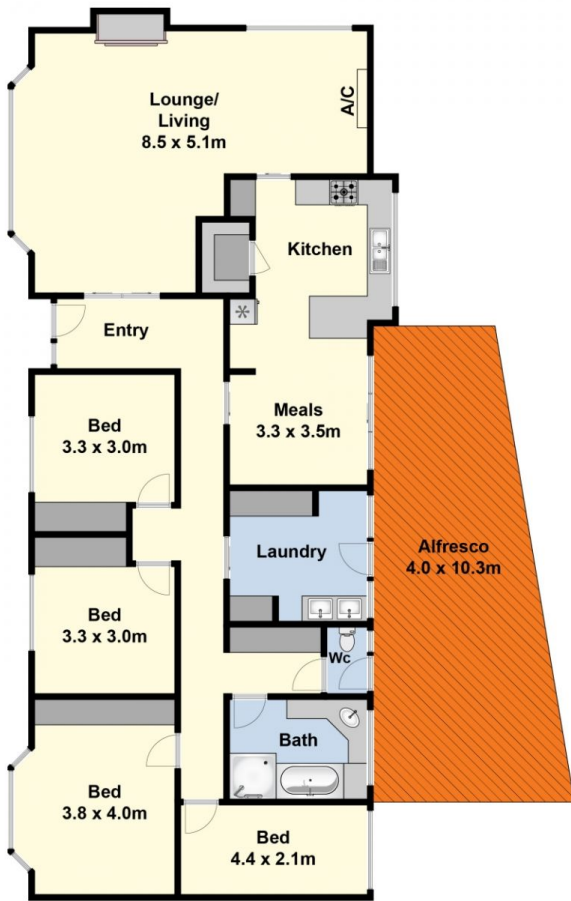
Type : House
Price : \$ 432,000
Land Size : 690 sqm
View : <https://www.maxwellcollins.com.au/sale/vic/geelong-district/whittington/residential/house/7456947>



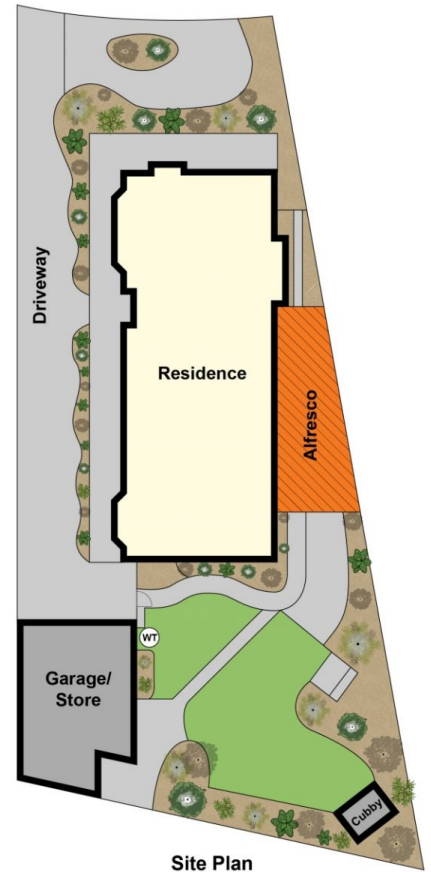
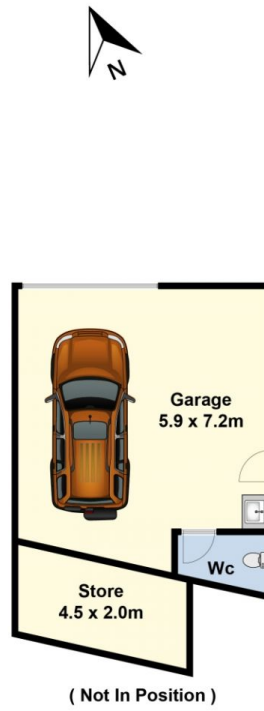
Shaun Carroll
03 5222 4711



Eugene Carroll
03 5222 4711



Ground Floor



Site Plan