



17-19 Oriondo Way Marshall VIC

3 2 2

This neatly presented brick veneer home is situated in a highly sought-after pocket of Marshall and is ideal for first home buyers, Melbourne commuters and investors given its close distance to the Marshall train station. The home has been well maintained and offers convenient and low maintenance living.

Featuring a light filled open plan living area, a fully equipped kitchen with stone benchtops, gas cooking, dishwasher and adjacent meals area, spacious living area, main bedroom with walk-in robe and ensuite, a further two bedrooms both with built-in robes share a central bathroom with shower and separate bath. Outside features a fantastic covered alfresco area which is ideal for barbeques and entertaining and a low maintenance yard with manicured gardens. The home is complete with central heating, split

Type : House
Price : \$ 490,000
Land Size : 339 sqm
View : <https://www.maxwellcollins.com.au/sale/vic/geelong-district/marshall/residential/house/7456934>

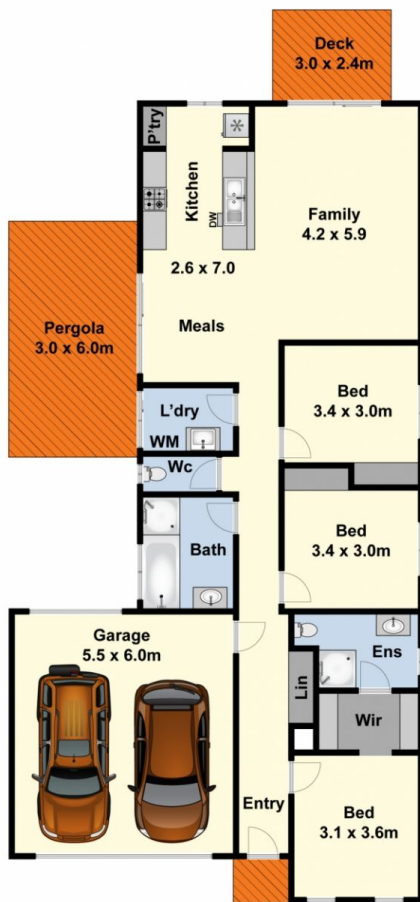


Shaun Carroll
03 5222 4711

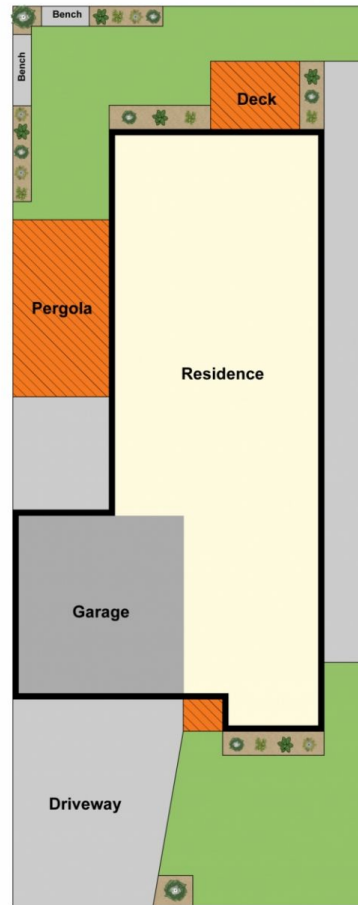


Eugene Carroll
03 5222 4711

[For full version visit the website](https://www.maxwellcollins.com.au)



Ground Floor



Site Plan