



## 23 Basford Court Marshall VIC

3 2 2

This wonderfully presented brick veneer home boasts spacious living throughout. Situated close to Marshall train stations, schools and shops, it's the perfect family home, ideally suiting first home buyers, investors and downsizers. Featuring a light filled, neutral interior with tiled front entry and spacious, open planned living with air conditioning unit, generous dining area and stylish kitchen with stainless steel appliances. Master bedroom is generous with WIR and contemporary ensuite. The two other bedrooms both feature BIR's and are serviced by the main bathroom. Other features include front security door, walk in pantry, security alarm system, intercom, ducted heating, split system cooling, private front yard, awnings, internal access from the large garage, low maintenance garden but enough to keep your hand, side deck ideal for entertaining when

**Type** : House  
**Price** : \$ 479,500  
**Land Size** : 374 sqm  
**View** : <https://www.maxwellcollins.com.au/sale/vic/geelong-district/marshall/residential/house/7456905>

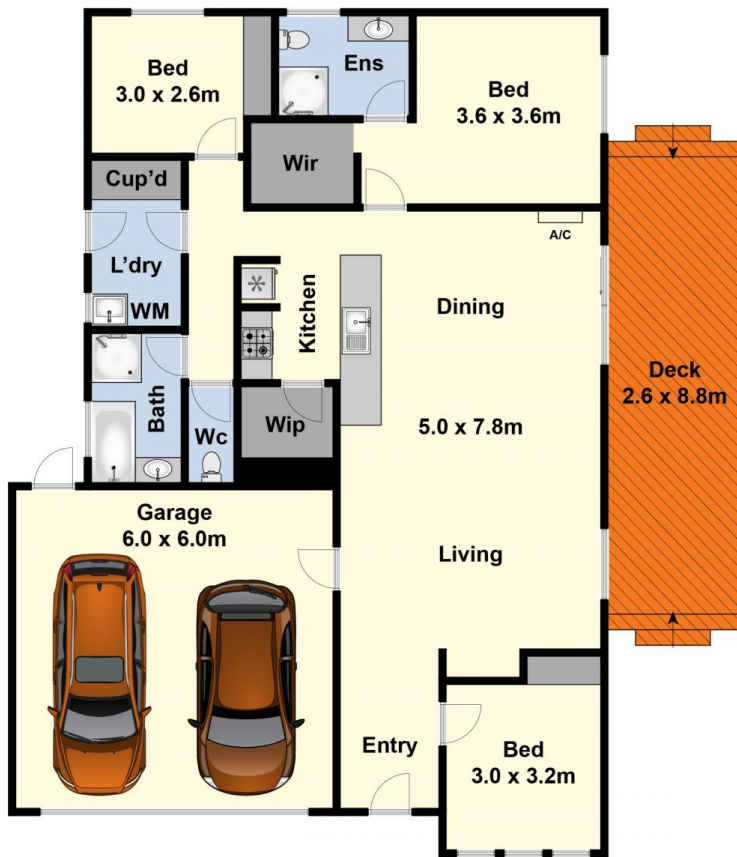


**Duncan Skene**  
03 5222 4711

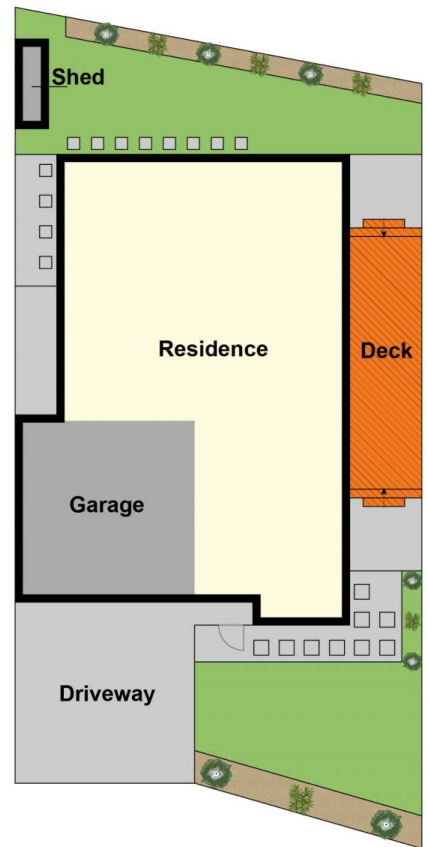


**Laura Vander Noord**  
03 5222 4711

[For full version visit the website](https://www.maxwellcollins.com.au)



Ground Floor



Site Plan