



91 Harvey Road Bannockburn VIC

4 2 2

This four bedroom ranch style home is set on over 8 hectares and is conveniently close to the township of Bannockburn and has handy access to the Melbourne/Geelong Ring Road. The reasonably level site consists of 4 paddocks with dam and additional shedding, town water and is currently in a farm Zone.

The future sub-divisional potential (STCA) makes this an exciting opportunity for developers looking for a large parcel of land on the fringe of the rapidly expanding township of Bannockburn.

Terms 10% Deposit Settlement 120 Days.
Inspections by appointment.

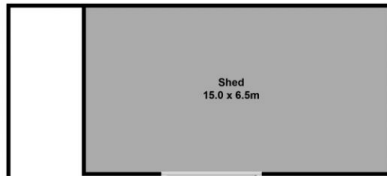
Type : Acreage/Semi-Rural
Price : \$ 2,500,000
Land Size : 8 ha
View : <https://www.maxwellcollins.com.au/sale/vic/geelong-district/bannockburn/residential/acreagesemirural/7456885>



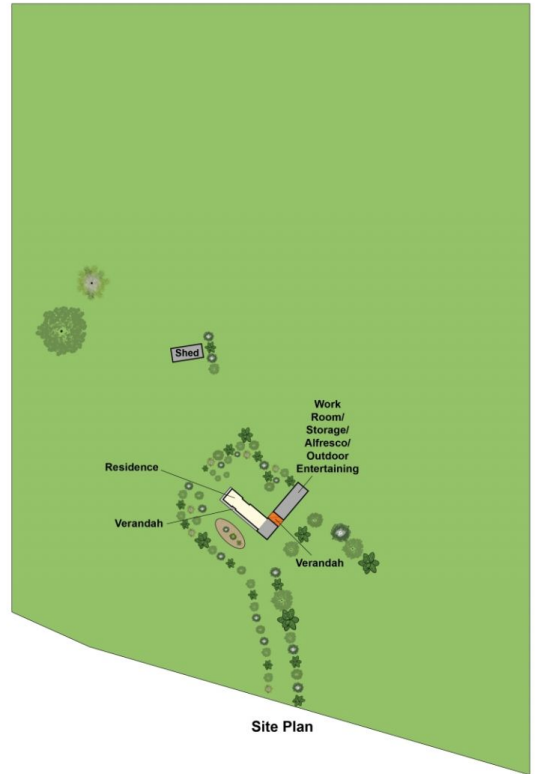
Eugene Carroll
03 5222 4711



Ground Floor



(Not In Position)



Site Plan