



2/58 Regent Street Whittington VIC

2 1 1

Ideally located moments from the heart of thriving Bellarine Village & Newcomb Central this quality 2 bedroom abode, peacefully set with preferred rear/side position will appeal to astute first home buyers, downsizers and investors seeking low maintenance lifestyle advantages with blue chip credentials. Boasting a tasteful interior, the spacious floorplan comprises entrance hall leading to a sizeable lounge and dining opening to light filled kitchen. Two robed bedrooms beside the immaculate bathroom and toilet. Outside, a private courtyard provides for enjoyment in a low maintenance setting. Further complements include single garage, laundry room with external access, wall heater, airconditioner and an enviable location only a short walk to amenities, public transport and easy access to the Geelong CBD.

[For full version visit the website](https://www.maxwellcollins.com.au)

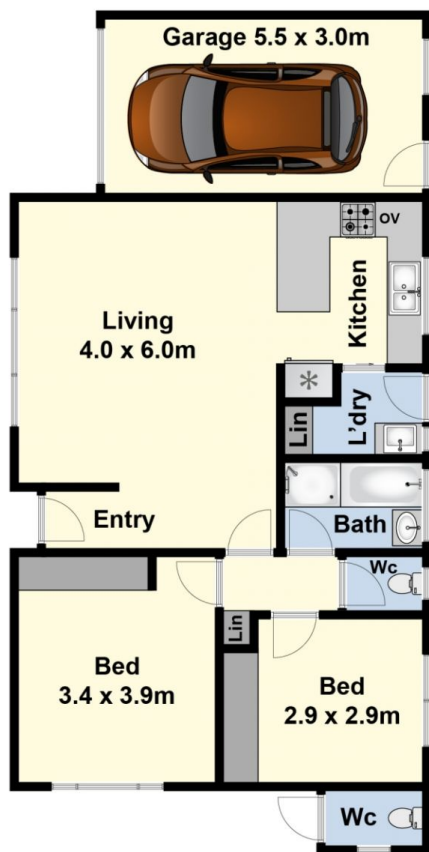
Type : Unit
Price : \$ 300,000
View : <https://www.maxwellcollins.com.au/sale/vic/geelong-district/whittington/residential/unit/7456868>



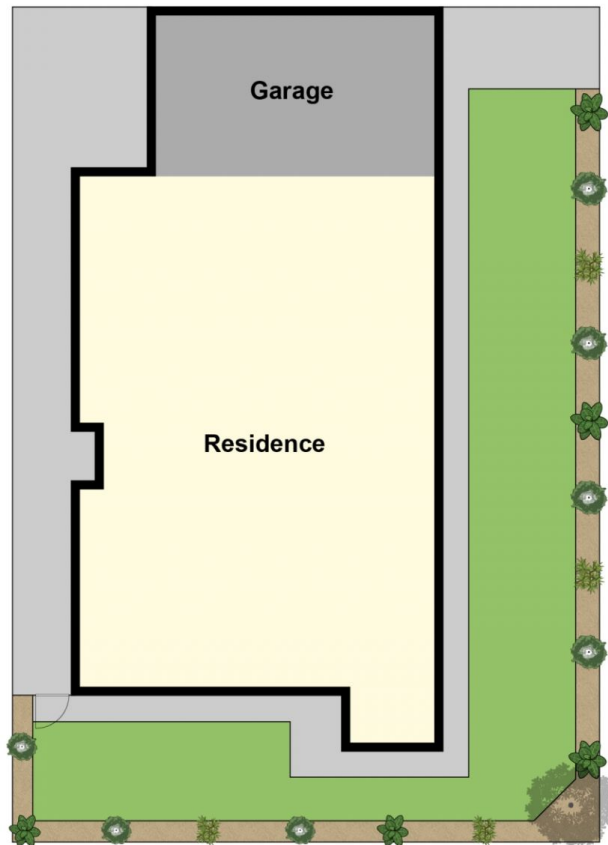
Duncan Skene
 03 5222 4711



Laura Vander Noord
 03 5222 4711



Ground Floor



Site Plan