



10/22-26 Craigie Road Newtown VIC

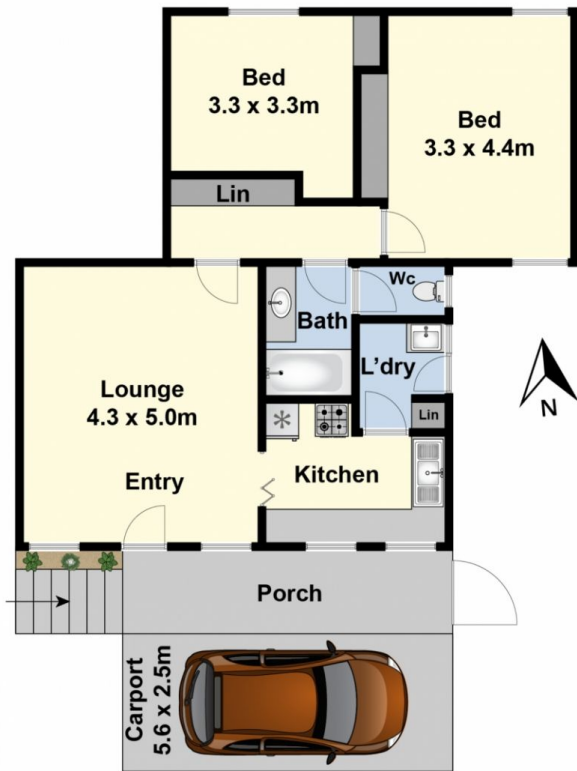
2 **1** **1**

Ever so quiet and private in a leafy cul de sac, you will be pleasantly surprised by this charming unit. Positioned at the rear corner of the complex, an elevated set back position ensures immaculate accommodation enjoys abundant natural light and a tranquil outdoor setting. Highlights include high ceilings, generous living and dining areas, two spacious bedrooms with excellent BIRs, a large fully equipped kitchen and bathroom, separate laundry, split system & with the added bonus of close access to the undercover carport. Enjoy a stroll to the beautiful Barwon River walking track, and only minutes to the vibrant Pakington Street shops and cafes.

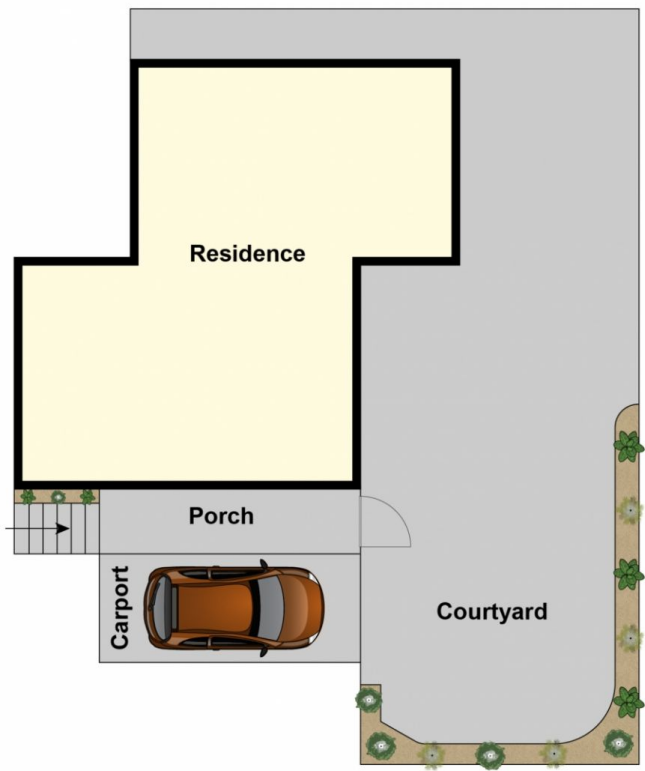
Type : Unit
Price : \$ 357,000
View : <https://www.maxwellcollins.com.au/sale/vic/geelong-district/newtown/residential/unit/7456859>



Laura Vander Noord
03 5222 4711



Ground Floor



Site Plan