



## 10 Peter Street Grovedale VIC

3 1 1

Roll up your sleeves! This brick veneer home on 653sqm (approx.) is situated in a sought-after pocket of Grovedale and only a short stroll to the popular Peter St shops. The home has an abundance of scope, ripe for renovation or redevelopment (STCA) and ideal for first home buyers, developers and tradies looking for their next project. Featuring three bedrooms, generous size lounge, kitchen with adjacent meals area and a central bathroom. Outside includes a fantastic north facing backyard, single garage and large shed. With handy positioning, close to schools, Waurm Ponds shopping centre and easy access to the Surf Coast and Geelong CBD. Take advantage of this unique opportunity and reap the rewards.

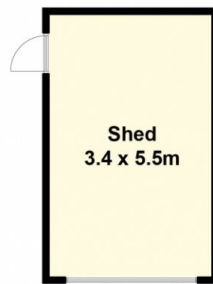
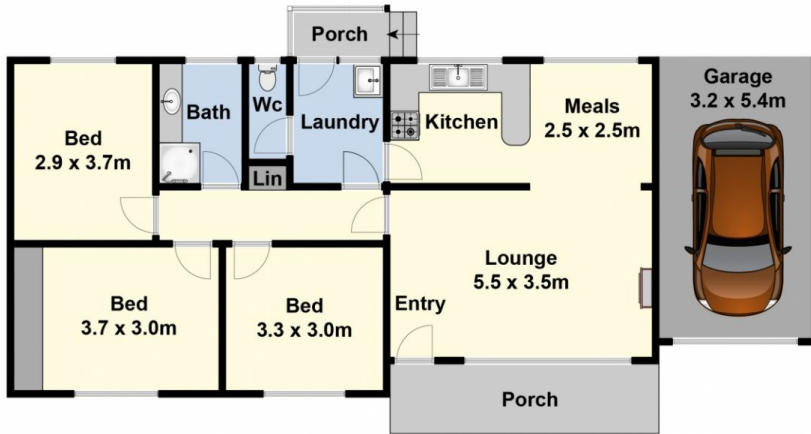
**Type** : House  
**Price** : \$ 415,000  
**Land Size** : 653 sqm  
**View** : <https://www.maxwellcollins.com.au/sale/vic/geelong-district/grovedale/residential/house/7456828>



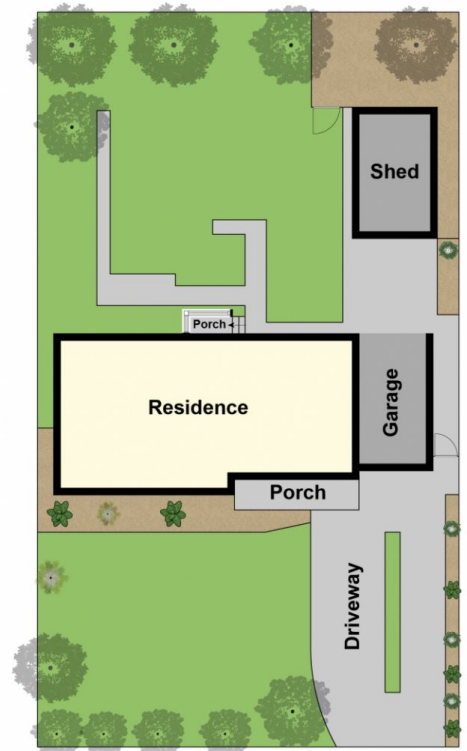
**Shaun Carroll**  
03 5222 4711



**Eugene Carroll**  
03 5222 4711



(Not In Position)



Site Plan