



## 45 Amarina Crescent Grovedale VIC

4 3 2

Be ready to tick all the boxes when you inspect this wonderful 4 bedroom family home. The convenient location is close to the Waurm Ponds shopping centre, Deakin Uni, Epworth Hospital, sporting facilities and access to the ring road. Features include spacious open plan living with beautiful timber flooring, dining area, fully equipped modern kitchen, study, spacious laundry, gas heating, air conditioner, main bedroom with walk in robe, ensuite and private deck, second living and a north facing deck upstairs, double garage plus a large rear garden, which is ideal for the kids to enjoy. This could be the one you have been waiting for.

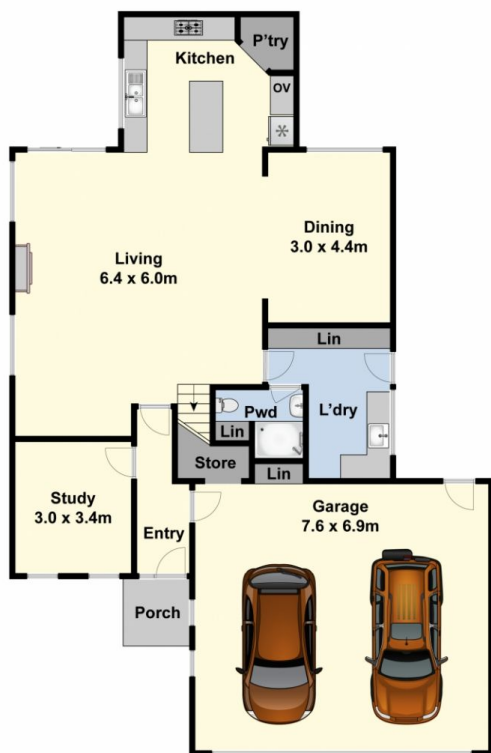
**Type** : House  
**Price** : \$ 740,000  
**View** : <https://www.maxwellcollins.com.au/sale/vic/geelong-district/grovedale/residential/house/7456822>



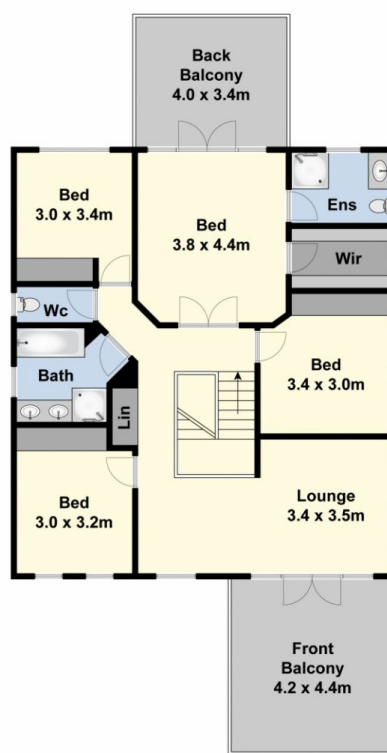
**Eugene Carroll**  
03 5222 4711



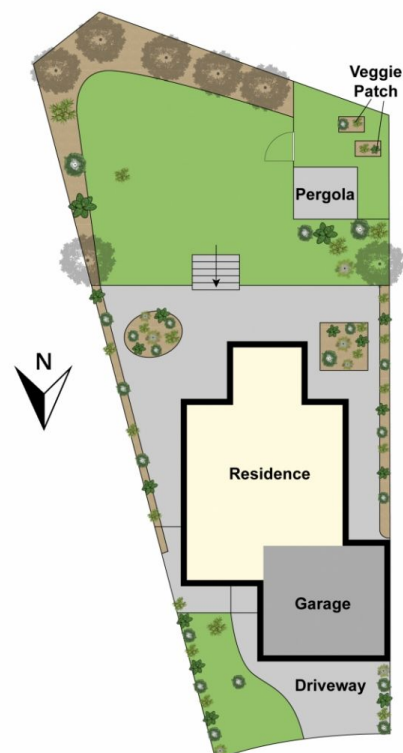
**Shaun Carroll**  
03 5222 4711



Ground Floor



First Floor



Site Plan