



14 Hewitt Drive Grovedale VIC

4 2 2

Situated in the ever-popular suburb of Grovedale & offering ample space across two levels this impressive home is primed for the growing family. Comprising of 4 bedrooms plus a study, master bedroom with ensuite including double vanity & spa. The home also boasts 4 living areas including open plan kitchen/family/meals, formal dining/living, large upstairs family room opening onto a balcony plus theatre/rumpus. Features include Central heating & cooling, walk in pantry, dishwasher & decked alfresco opening onto a spacious and private rear yard. Ideally located in a quiet street with ample land size of 563m² (approx.), close to Marshall train station, quality primary and secondary schools and local amenities such as IGA and Aldi. Getting to the famous Surf Coast is also a breeze with the likes of Barwon Heads Road & the Surf Coast Hwy

Type : House
Price : \$ 780,000
Land Size : 563 sqm
View : <https://www.maxwellcollins.com.au/sale/vic/geelong-district/grovedale/residential/house/7456742>

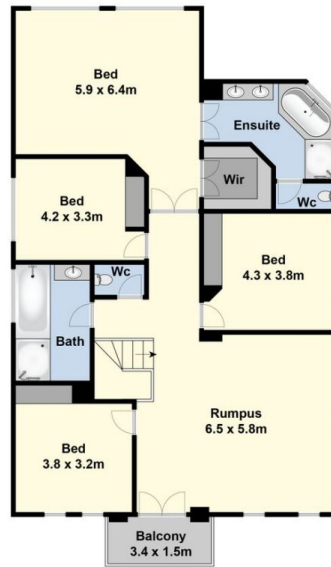


Simon Braybrook
 03 5222 4711

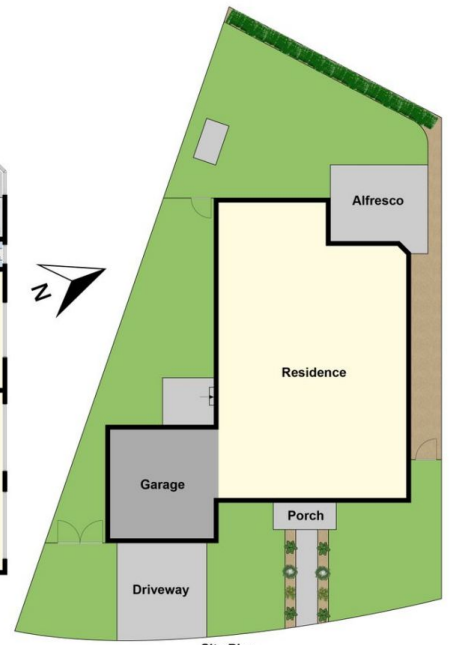
[For full version visit the website](https://www.maxwellcollins.com.au)



Ground Floor



First Floor



Site Plan