



## 81 Church Street Grovedale VIC

3 1 2

This home presents an exciting opportunity to secure an affordable home with fantastic positioning, conveniently in the heart of Grovedale. Situated on a generous 683sqm (approx.) allotment, this neat and tidy brick veneer home would ideally suit first home buyers, young families and investors. Featuring three bedrooms with built in robes, a spacious front dining and lounge area with cosy open fireplace, functional size kitchen with gas cooking, adjacent meals area with gas heating and a central bathroom with shower and separate bath. Outside features a sizable yard for the kids to play and a double carport. Walking distance to Mandama Primary School and Waurm Ponds Shopping Centre and only a short drive to Deakin University and Epworth Hospital. This is one to act on quick!

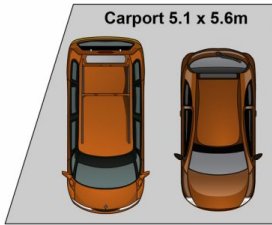
**Type** : House  
**Land Size** : 683 sqm  
**View** : <https://www.maxwellcollins.com.au/sale/vic/geelong-district/grovedale/residential/house/7456738>



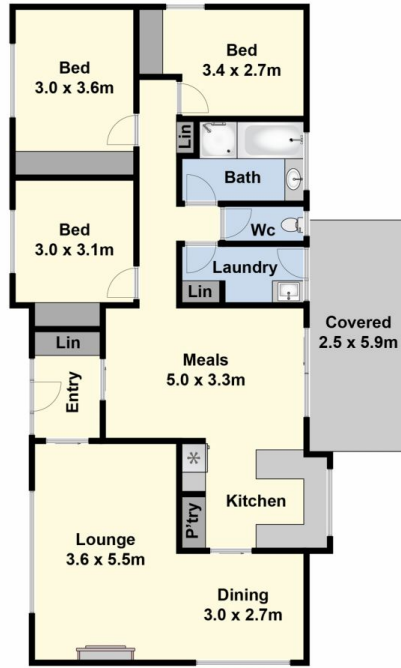
**Shaun Carroll**  
03 5222 4711



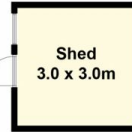
**Eugene Carroll**  
03 5222 4711



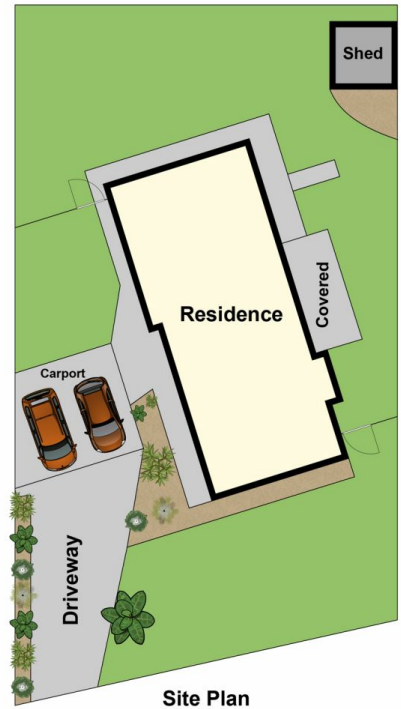
(Not In Position)



Ground Floor



(Not In Position)



Site Plan