



2/280 High Street Belmont VIC

2 2 1

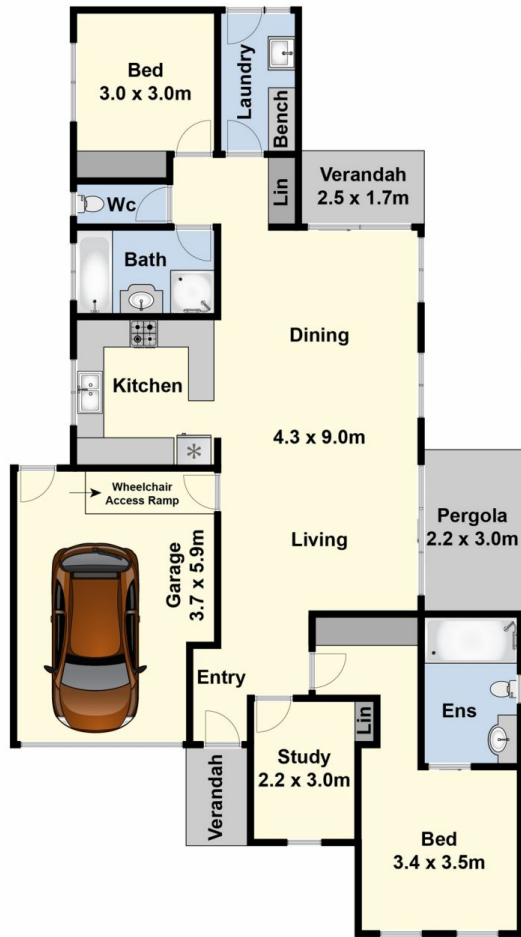
Ideally suited to downsizers or investors, this quality built brick veneer townhouse is conveniently located, close to the popular High St shops and services of Belmont. Featuring two good size bedrooms, master with walk through robe and ensuite, a functional open plan living/dining area, central kitchen, study, central heating and a good size bathroom with separate toilet. Outside is a low maintenance garden, but enough to keep your hand in, a sizeable private courtyard, ideal for entertaining family and friends and a single lock-up garage with internal access. Don't miss this opportunity!

Type : Unit

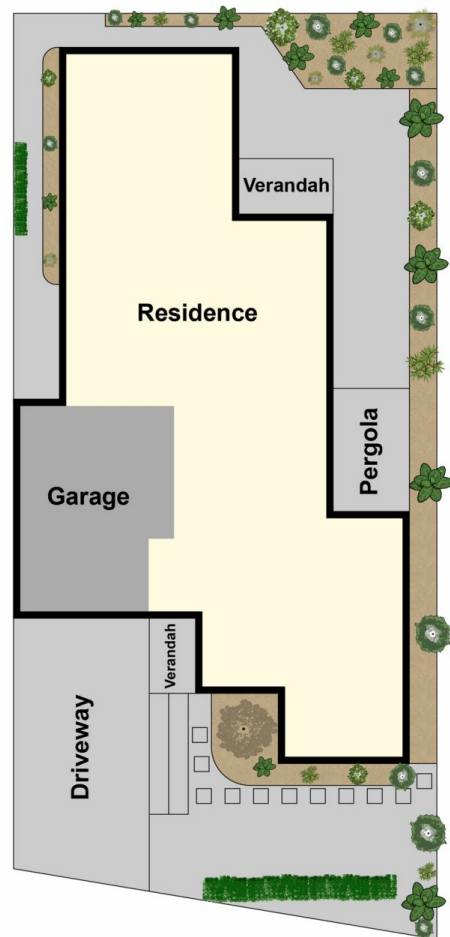
View : <https://www.maxwellcollins.com.au/sale/vic/geelong-district/belmont/residential/unit/7456732>



Duncan Skene
03 5222 4711



Ground Floor



Site Plan