



14 Werner Avenue Marshall VIC

4 2 2

Here's a well designed home that would suit first home buyers and downsizers, as well as investors, that are searching for that extra room. Located within easy reach of the Marshall Train Station this modern home features four bedrooms (master with ensuite and WIR) plus two separate living areas, separated by a stylish kitchen with dishwasher. A remote controlled double garage with internal access and a manageable, low maintenance garden completes the picture. With ducted heating and air conditioning this one is sure to appeal. Put this one to the top of your list.

Type : House

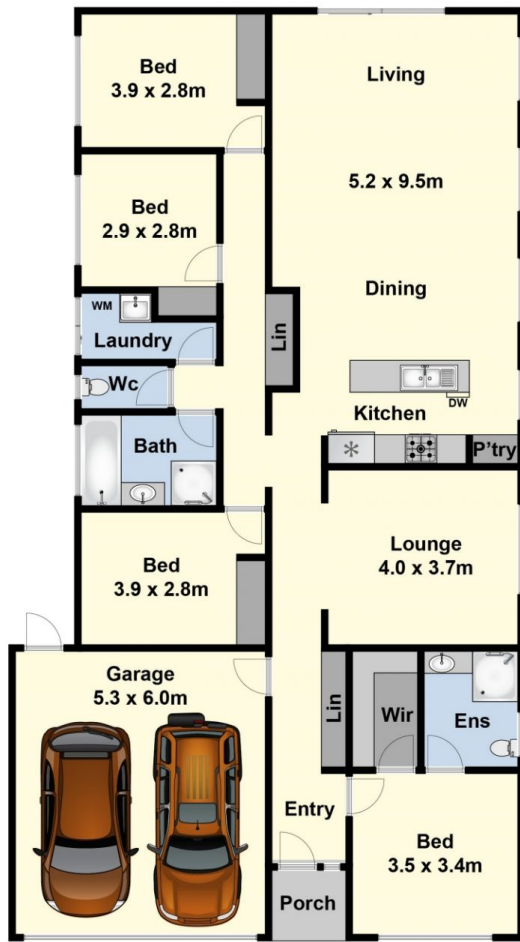
View : <https://www.maxwellcollins.com.au/sale/vic/geelong-district/marshall/residential/house/7456725>



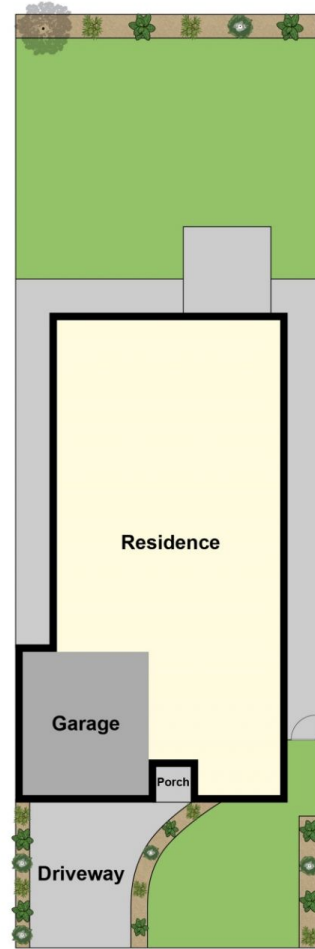
Eugene Carroll
03 5222 4711



Lois Wilson
03 5222 4711



Ground Floor



Site Plan