



## 25 Dudley Street Belmont VIC

5 1 2

On an impressive 702sqm (approx.), with potential access to the rear lane, this charming home fulfils a range of priorities from a substantial first home to immediately lettable investment or spectacular new home or development site (STCA). Meticulously maintained by the same family for over forty years, this home offers 5 bedrooms, a comfortable living room with a wood log fire place, spacious kitchen dining area, a garage, carport and room for more parking in the driveway. There is the added bonus of a workshop and garden shed. A short stroll to the bustling High Street shops and lifestyle conveniences, easy access to the CBD, Melbourne and Surf Coast, this home is located perfectly for ease of living.

**Type** : House

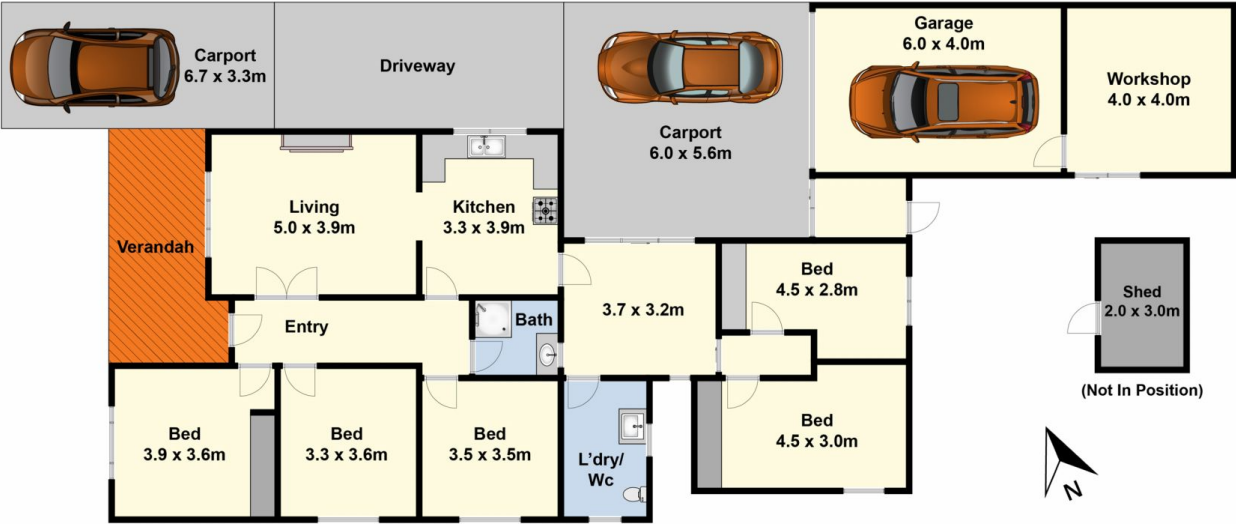
**View** : <https://www.maxwellcollins.com.au/sale/vic/geelong-district/belmont/residential/house/7456710>



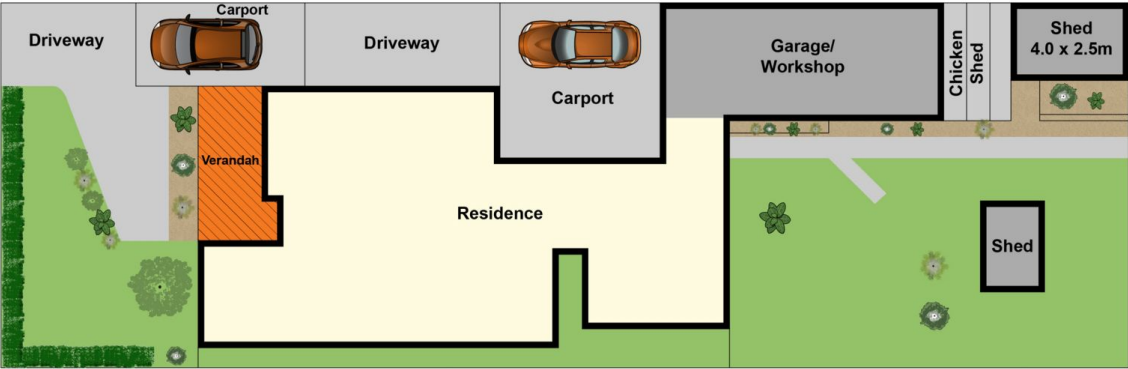
**Duncan Skene**  
03 5222 4711



**Laura Vander Noord**  
03 5222 4711



Ground Floor



Site Plan