



36 Greenville Drive Grovedale VIC

3 1 1

Situated on 613sqm (approx.) in a quiet established street is this neat and tidy brick veneer home that is sizable and presents fantastic potential. It's an ideal opportunity for astute investors and first home buyers looking for that entry level home into the market. Featuring three bedrooms with built-in robes and ceiling fans, polished timber floors, central heating throughout, lounge and dining room with large windows allowing in plenty of natural light, updated functional kitchen with gas cooking, dishwasher and adjacent meals area, updated two-way bathroom with double vanity, shower and separate bath. Outside includes landscaped gardens, 1.6kw solar panels on the roof, an undercover area, a sizable backyard for the kids to play, an automatic gate and long driveway which provides plenty of off-street parking along with an extra-large single garage /

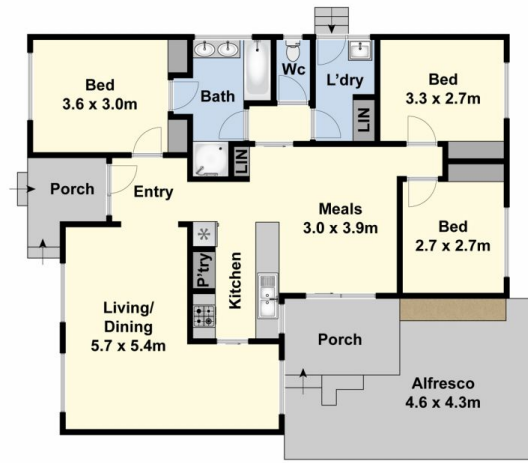
Type : House

View : <https://www.maxwellcollins.com.au/sale/vic/geelong-district/grovedale/residential/house/7456692>

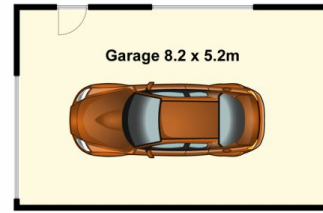


Shaun Carroll
03 5222 4711

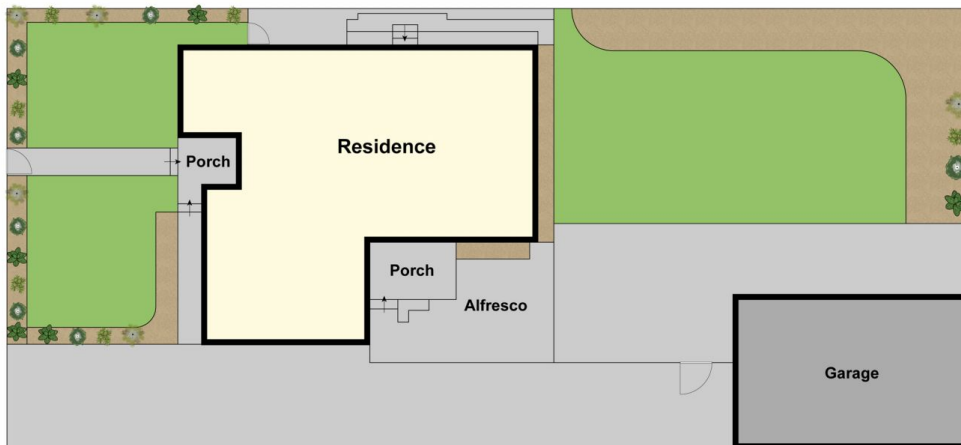
[For full version visit the website](https://www.maxwellcollins.com.au)



Ground Floor



(Not In Place)



Site Plan