



16 Hereford Drive Belmont VIC

3 2 2

In a coveted family neighborhood with easy access to local schools, public transport & shops, this classic brick home offers comfortable family living with outstanding future potential. This solid well planned home features 3 bedrooms all with built in robes, main with ensuite, plus study, ample storage, comfortable lounge with OFP, central kitchen, formal dining, 2nd living area and large laundry. Outside is a double garage, garden shed, and two driveways ideal for osp, caravan or boat all on a large corner allotment of 730m2 approx. Close to walking and riding tracks along the Waurm Ponds Creek, a short drive to High Street and Waurm Ponds Shopping Centre, library, Leisure Link and the beaches of the surf coast or Melbourne via the ring road. Perfect first home, family home or rock solid investment in a proven growth suburb.

[For full version visit the website](https://www.maxwellcollins.com.au)

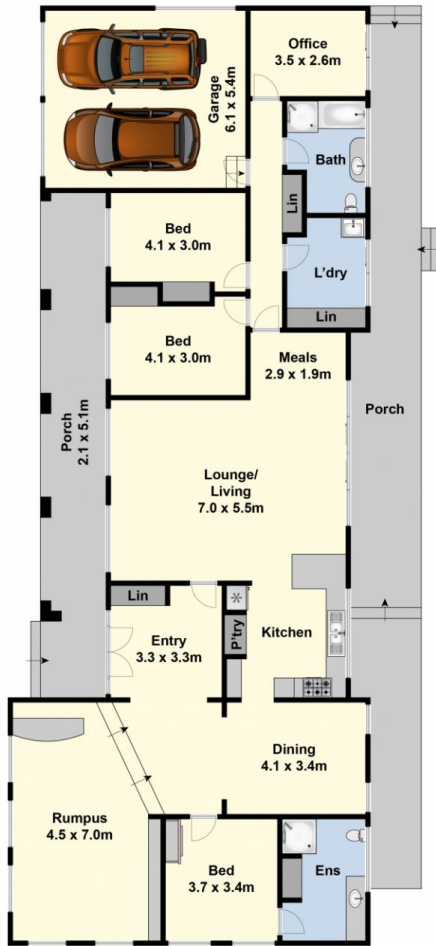
Type : House
Price : \$ 555,000
View : <https://www.maxwellcollins.com.au/sale/vic/geelong-district/belmont/residential/house/7456687>



Duncan Skene
 03 5222 4711



Laura Vander Noord
 03 5222 4711



Ground Floor



Site Plan