



**5 Cootamundra Drive Armstrong Creek VIC**

4 2 2

Situated in the exciting Ashbury Estate is this home that has been newly built to the highest quality. Boasting the perfect lifestyle balance, positioned conveniently between Geelong, Surf Coast and Bellarine Peninsula. The home offers spacious and low maintenance living, ideally suiting first home buyers, investors and young families. Featuring four bedrooms with built-in robes, the main includes a walk-in robe and sizable ensuite, a light filled tiled open plan living area, front lounge which is an ideal parents retreat, functional kitchen with gas cooking and dishwasher, family bathroom with shower and separate bath, central heating throughout, s/s air-conditioning and a double garage with internal access. Outside includes an undercover alfresco entertaining area and neatly landscaped gardens. With the estate including parks,

**Type** : House

**View** : <https://www.maxwellcollins.com.au/sale/vic/geelong-district/armstrong-creek/residential/house/7456640>

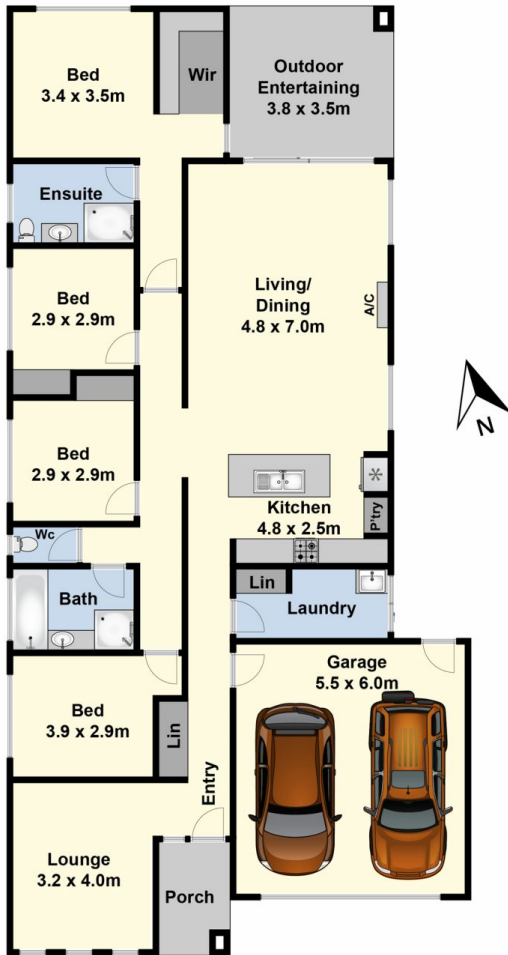


**Shaun Carroll**  
03 5222 4711

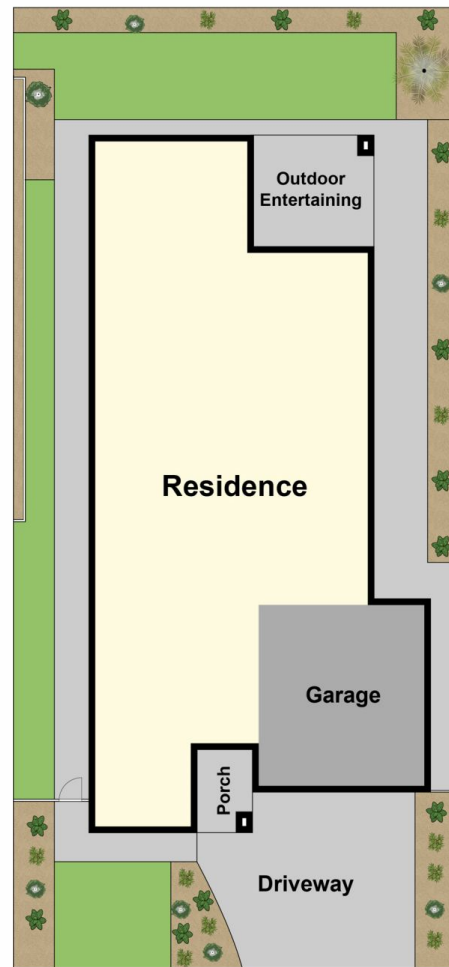


**Nick Lord**  
03 5222 4711

[For full version visit the website](https://www.maxwellcollins.com.au)



Ground Floor



Site Plan