

20 Gwyther Road Highton VIC

4 1 1

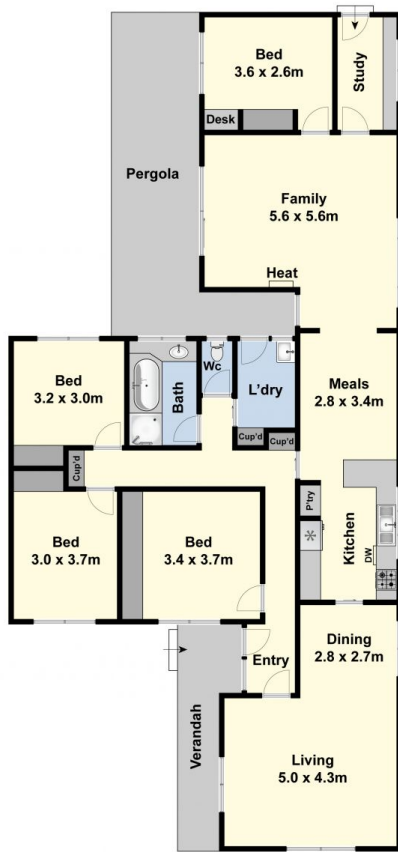
This sizable brick veneer home is situated on a generous 721sqm (approx.) block and boasts multiple living areas, making it perfect for a young family, first home buyer or investor. Situated in a quiet street yet conveniently close to Highton and Waurm Ponds shopping centres, schools, Deakin University and Epworth Hospital. Featuring four bedrooms with the main including a double robe, front living room with dining area for the parents, a functional kitchen with gas cooking and dishwasher with adjacent meals area, central bathroom with shower and separate bath, study/storage room, a spacious family room at the rear opens out to a large north facing backyard which is fantastic for kids and entertaining plus a single carport with gate access to the yard. Take advantage of this wonderful opportunity today to live in such a convenient location in

Type : House
Land Size : 721 sqm
View : <https://www.maxwellcollins.com.au/sale/vic/geelong-district/highton/residential/house/7456612>



Shaun Carroll
 03 5222 4711

[For full version visit the website](https://www.maxwellcollins.com.au)



Ground Floor



Site Plan

Approx. Area 174m²

Whilst bwrn.com.au has made every attempt to ensure the accuracy of the floor plan contained here, measurements are approximate and no responsibility is taken for any error, omission, or mis-statement. This plan is for illustrative purposes only.



20 Gwyther Road, Highton

maxwell collins