



68 Hoddle Drive Leopold VIC

4 2 2

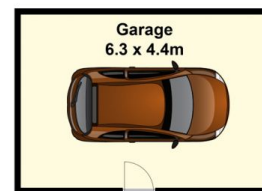
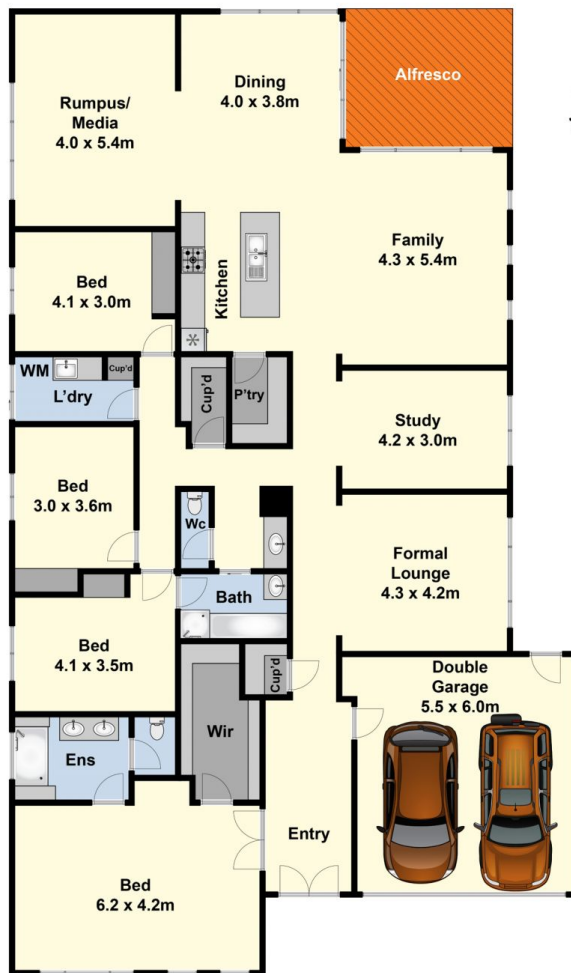
This wonderful 4 bedroom home is located in an established neighbourhood and offers the chance to enjoy a modern lifestyle for many years to come. Entertaining will be a breeze as the choice of living areas include a formal lounge, open plan family area with tiled meals, rumpus room, study plus a fantastic undercover alfresco area which is perfect for summer BBQ's. Other features include huge main bedroom with ensuite and walk in robe, ducted heating and split a/c, spa bath, fully equipped modern kitchen with gas cook top and walk in pantry, double garage with auto door and internal access. The low maintenance garden is set on a 648m² block and has a bird avery plus a large workshop/shed. This immaculate home is sure to tick all the boxes.

Type : House

View : <https://www.maxwellcollins.com.au/sale/vic/geelong-district/leopold/residential/house/7456559>



Eugene Carroll
03 5222 4711



Site Plan