



86 Gloucester Street Grovedale VIC

4 2 2

Ready made to simply move in and enjoy is this family home of practical living options positioned in a great location close to Wairn Ponds shopping complex, Deakin University, Leisure link, Epworth Geelong hospital and access to the ring road. Features include 4 bedrooms plus study, main with WIR and ensuite, 2 living areas, a fully equipped kitchen & open meals with central heating throughout. Outside is a double garage, low maintenance garden and a wonderful pergola which creates the perfect outdoor entertainment area for the family. Don't miss it.

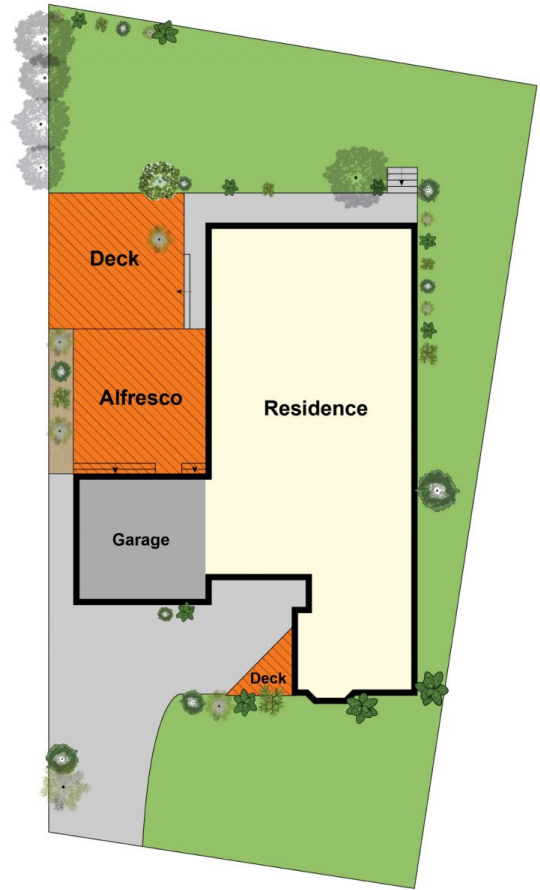
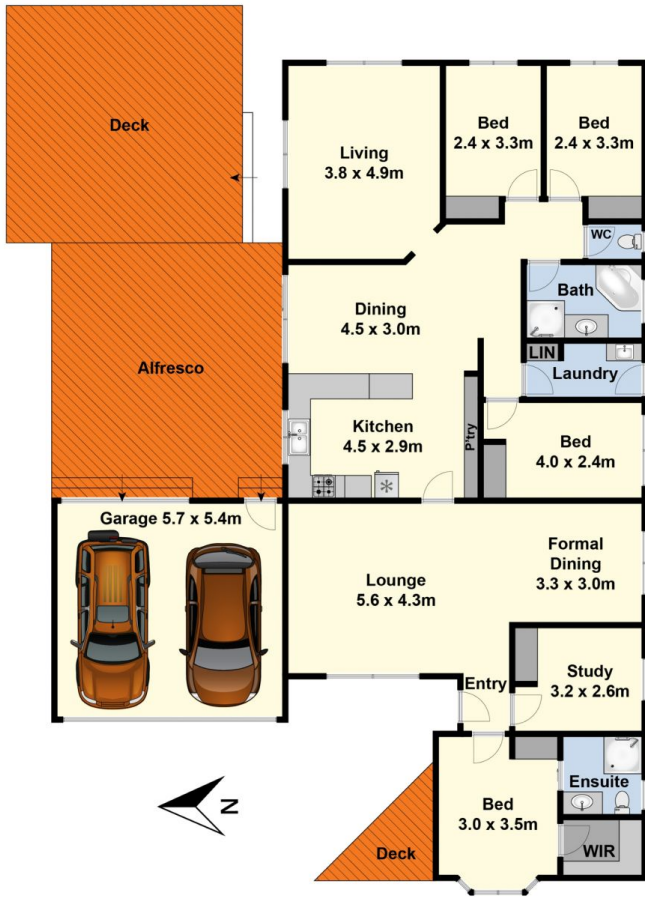
Type : House
Land Size : 715 sqm
View : <https://www.maxwellcollins.com.au/sale/vic/geelong-district/grovedale/residential/house/7456544>



Duncan Skene
03 5222 4711



Laura Vander Noord
03 5222 4711



Site Plan