



## 25 Greenville Drive Grovedale VIC

3 2 2

Focused on family and positioned for exceptional comfort and convenience in a lifestyle location. Upon entry, the living and separate dining room are immediately inviting; sweeping through to a large functional kitchen and 2nd living space. Stepping outside you are greeted by a wonderful undercover entertaining space which leads out into the resort style pool area, the ideal setting to relax and entertain. The master bedroom boasts a walk in robe and an ensuite, two additional bedrooms feature built in robes and are serviced by a family bathroom and separate toilet. Car accommodation is provided by a double lock up garage. The home features 2 split systems and also fans in the bedrooms for comfort all year round. Close to schools, the ever growing Waurin Ponds Shopping Centre and Surf Coast Hwy for easy access to the Geelong CBD and coast.

**Type** : House

**View** : <https://www.maxwellcollins.com.au/sale/vic/geelong-district/grovedale/residential/house/7456524>

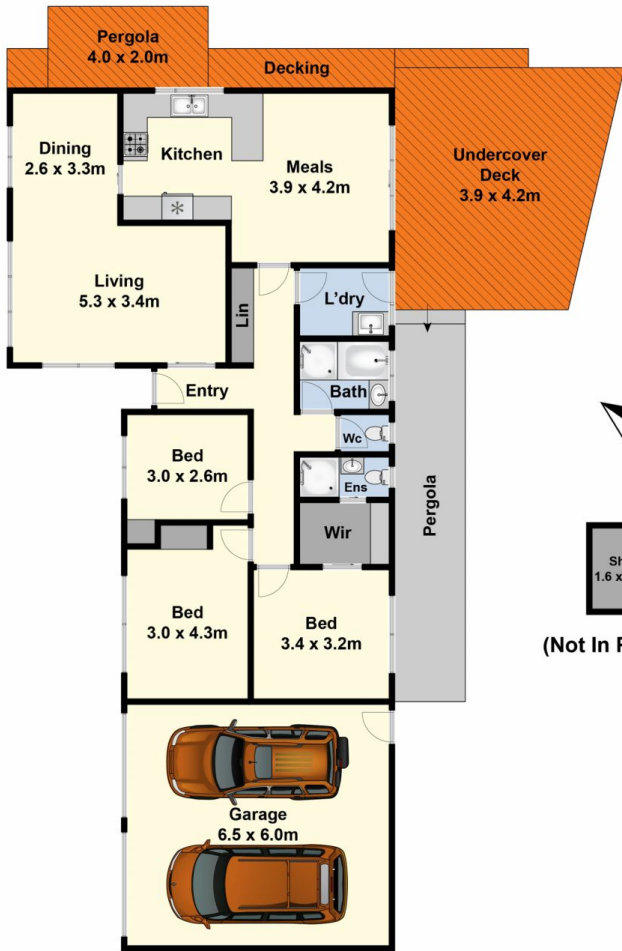


**Laura Vander Noord**  
03 5222 4711

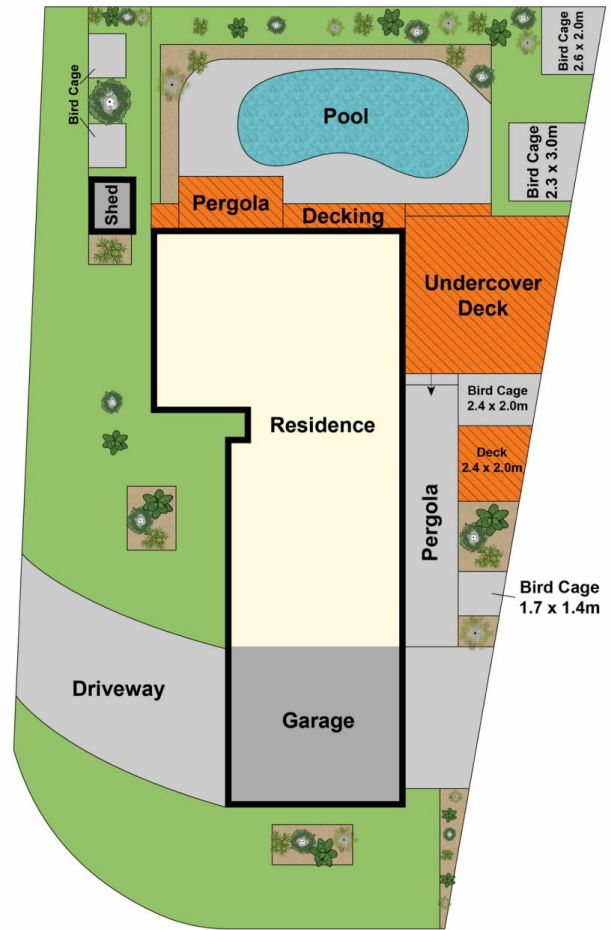
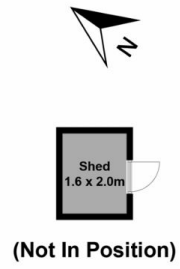


**Nick Lord**  
03 5222 4711

[For full version visit the website](https://www.maxwellcollins.com.au)



Ground Floor



Site Plan