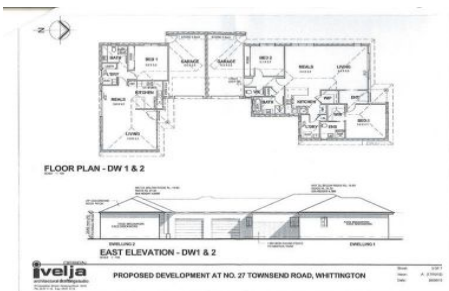
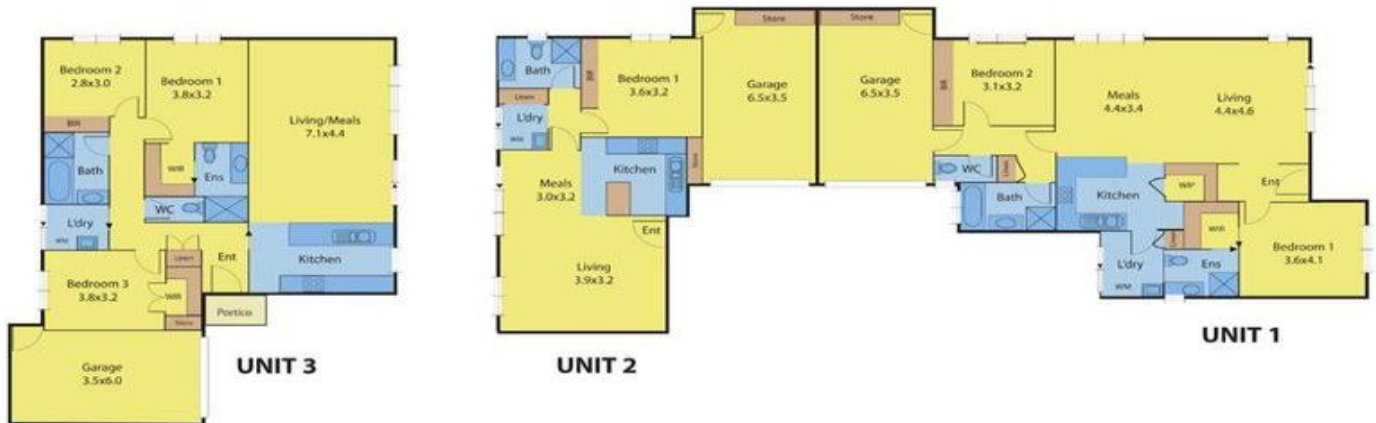


FLOORPLANS UNITS 1, 2 & 3/27 TOWNSEND ROAD, WHITTINGTON



2/7 Koala Court WHITTINGTON VIC

3 2 1

Choose between purchasing a 1, 2 or 3 bedroom unit. These affordable units are soon to be completed and offer a fantastic opportunity for first home buyers, downsizers or even investors.

Features include open plan tiled living areas, ensuite and walk in robe in units 2 and 3, split airconditioning plus lock up garage with auto door.

Contact the agent for further details and stamp duty savings.

(Internal photos are indicative only of builder's completed work).

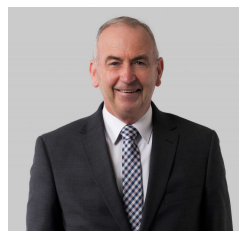
Unit 1 - 2 Bedroom, 2 bathroom - SOLD

Unit 2 - 1 Bedroom, 1 bathroom - SOLD

Unit 3 - 3 Bedroom, 2 bathroom - SOLD

Type : Unit

View : <https://www.maxwellcollins.com.au/sale/vic/geelong-district/whittington/residential/unit/7455568>



Eugene Carroll
03 5222 4711