



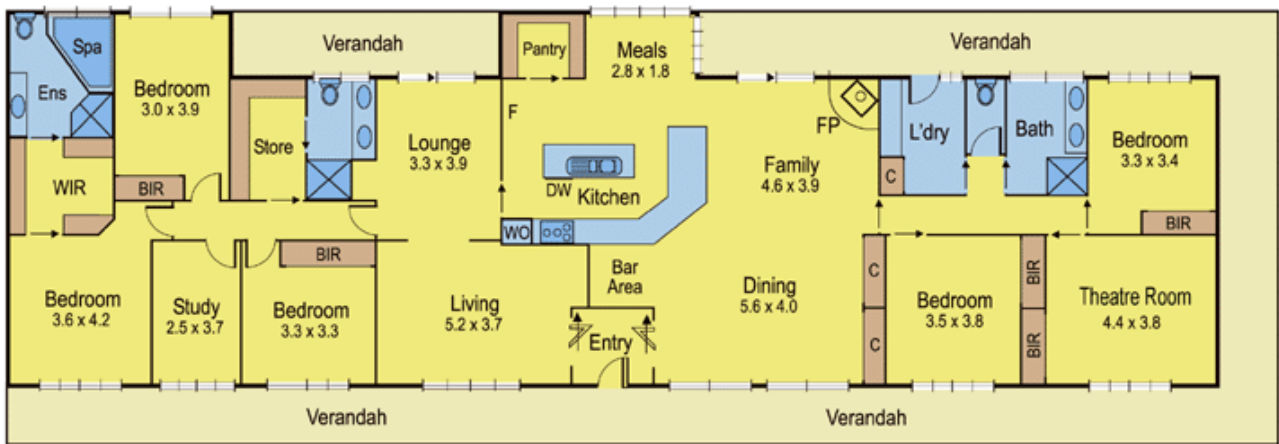
## 25 Native Hut Drive TEESDALE VIC

5 3 3

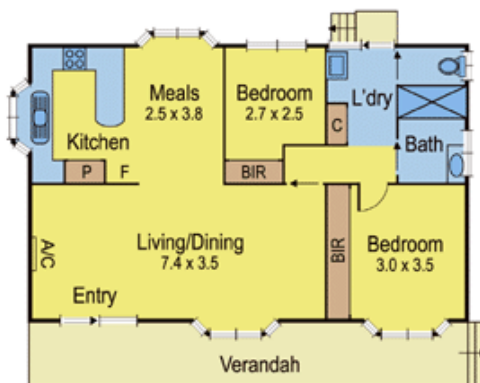
This beautifully presented home is set on 1.53 hectares of land, conveniently located 7 minutes drive from Bannockburn. Comprising family living areas with separate dining space, theatre room, stunning new kitchen and room for the largest of families with 5 bedrooms (master with ensuite), a further 2 bathrooms and study area. On established gardens providing 3 paddocks, an inground pool, tennis court and a fully self contained unit. Terrific storage shed, large double garage and open bay ideal for the boat or caravan. If you're ready for a lifestyle change, this could be the one.

**Type** : House

**View** : <https://www.maxwellcollins.com.au/sale/vic/geelong-district/teesdale/residential/house/7454968>



Main Residence



Self-Contained Unit

