

475 Melaluka Road LEOPOLD VIC

5 3

Set on 4 ha (9.88 acres) this idyllic property has stunning views of Lake Connawarre and is still within close proximity of shops and the city. The elevated home consists of 3 bedrooms and study, spacious lounge with split airconditioner, ensuite, plus a separate 2 bedroom cottage making it ideal for a teenager. Other features include inground pool, large shed, livestock paddock, water tanks and storage under the house. Imagine owning a property and being able to enjoy the tranquil feeling watching the abundance of bird life and the spectacular ever changing aspect of the lake.

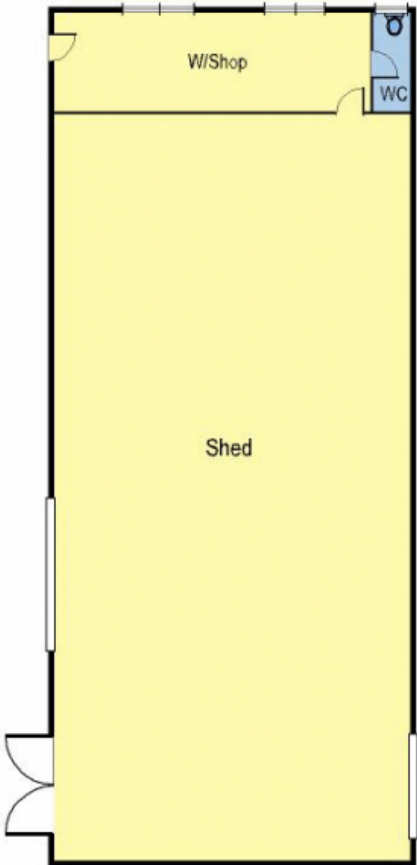
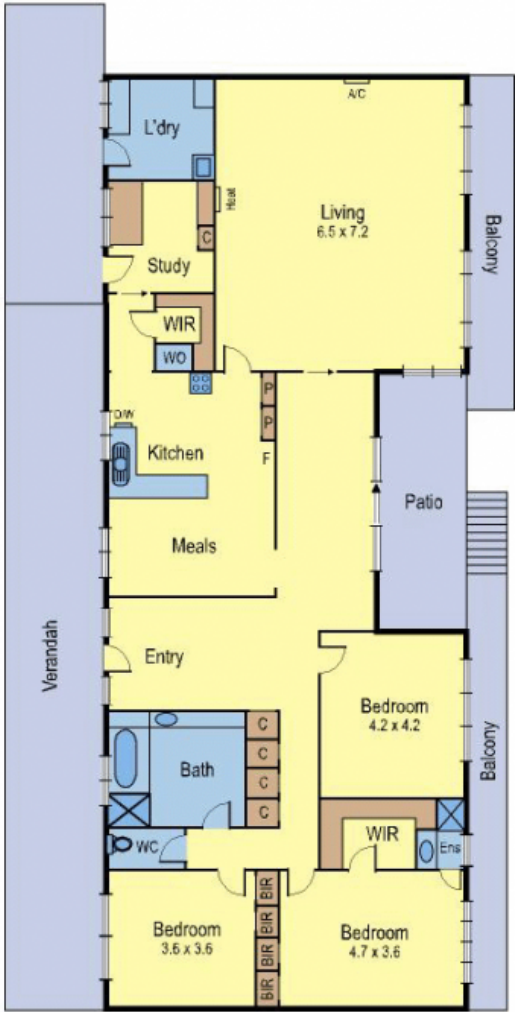
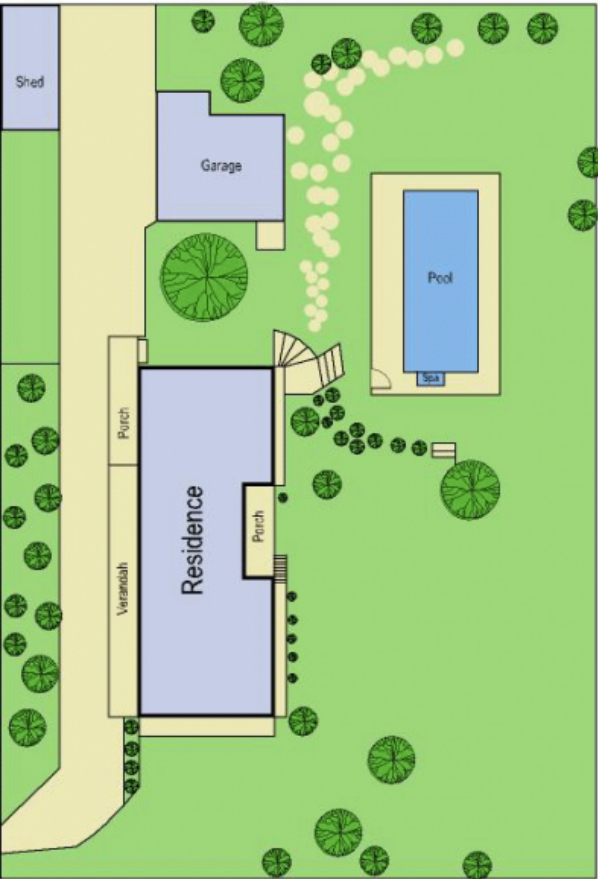
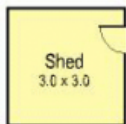
Type : Acreage/Semi-Rural

View : <https://www.maxwellcollins.com.au/sale/vic/geelong-district/leopold/residential/acreagesemirural/7454901>



Eugene Carroll
03 5222 4711

475 Melaluka Road, Leopold



(not in position)