



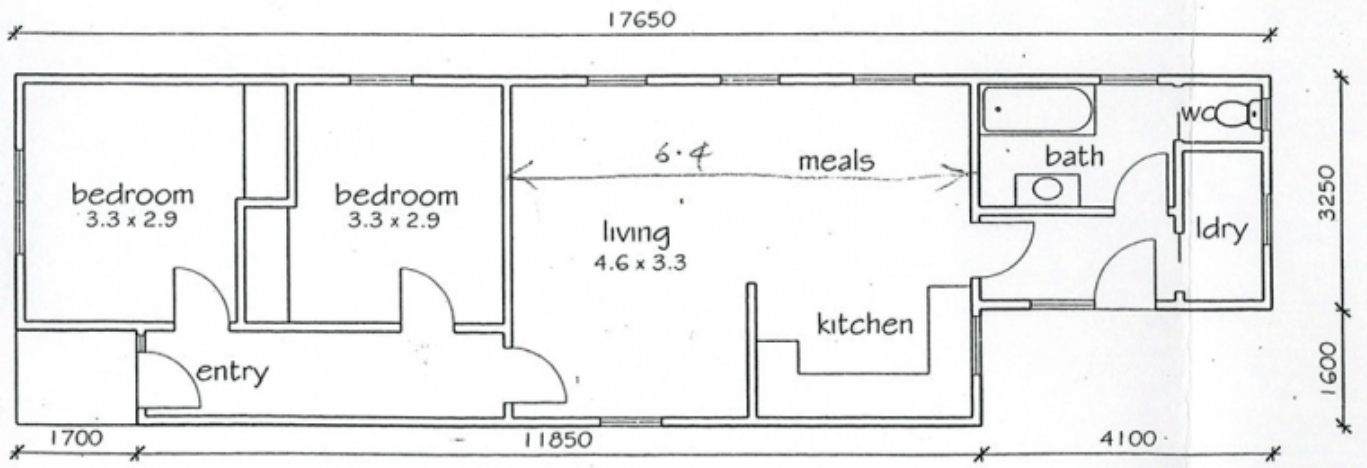
18 Russell Street NEWTOWN VIC

2  1 

This character WB home set within walking distance to vibrant Pakington St and Skilled Stadium offers 2 generous sized bedrooms with built in robes, open lounge/dining, modern kitchen, polished floorboards and timber venetian blinds throughout, bathroom with claw bath, internal laundry and a north facing private rear yard with off street parking. A delightful home in an ideal location.

Type : House

View : <https://www.maxwellcollins.com.au/sale/vic/geelong-district/newtown/residential/house/7454859>



floor plan 1:100