

## 11 Moira Lane GROVEDALE VIC

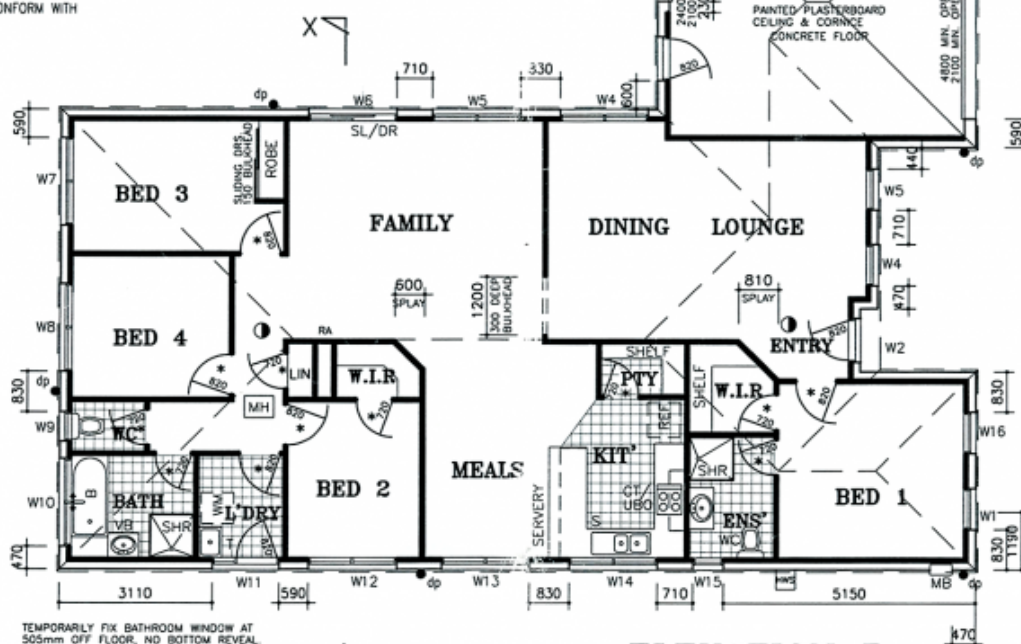
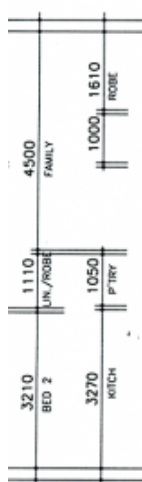
4  2  2 

This well made & beautifully presented home provides both formal living area and open plan living/dining complete with floating timber floors. Generous kitchen area with s/s appliances, 3 bedrooms (master with ens) & separate study/4th bedroom. Extras incl. d/heating, RC/AC, sec. sys & video monitor. Outdoors a large covered alfresco area, neat gardens & double garage. Well appointed & appealing from start to finish.

**Type** : House

**View** : <https://www.maxwellcollins.com.au/sale/vic/geelong-district/grovedale/residential/house/7454850>

NOTE: PROVIDE 1No. TEMPERATURE CONTROL DEVICE TO REGULATE HOT WATER SUPPLY TO BATHROOM & ENSUITE TO CONFORM WITH PLUMBING & DRAINAGE CODE.



'TR.

 $\overline{T}_{Gr'}$