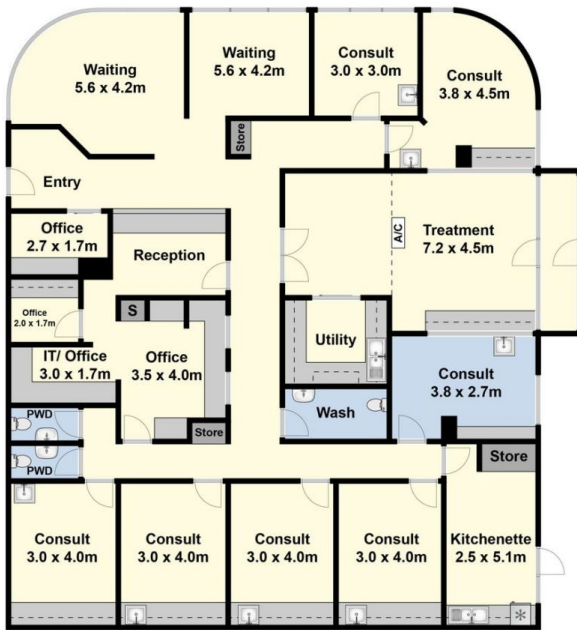




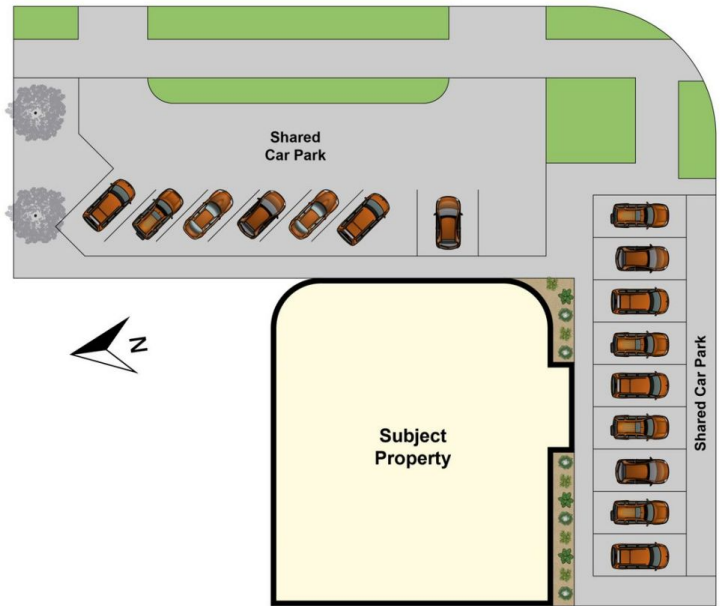
1, 2 & 6/122 Burdoo Drive Grovedale VIC

- * Established fully fitted out medical clinic
- * Close to residential growth corridor, schools, shopping centre complexes
- * Renewed five year lease commenced March 2021 with options
- * 10% deposit, balance 60 days
- * Zoned Commercial 1

Type : Healthcare
Building Size : 275 sqm
View : <https://www.maxwellcollins.com.au/sale/vic/geelong-district/grovedale/commercial/healthcare/7454568>



Ground Floor



Site Plan