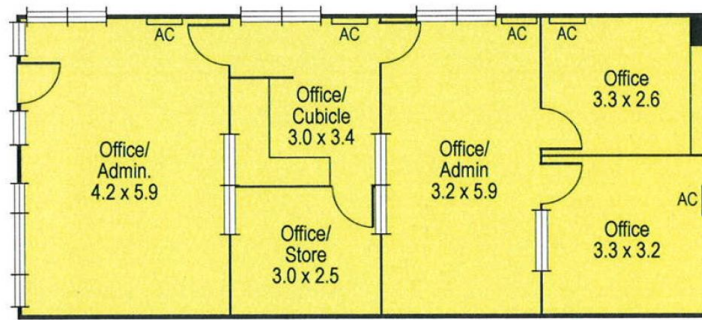




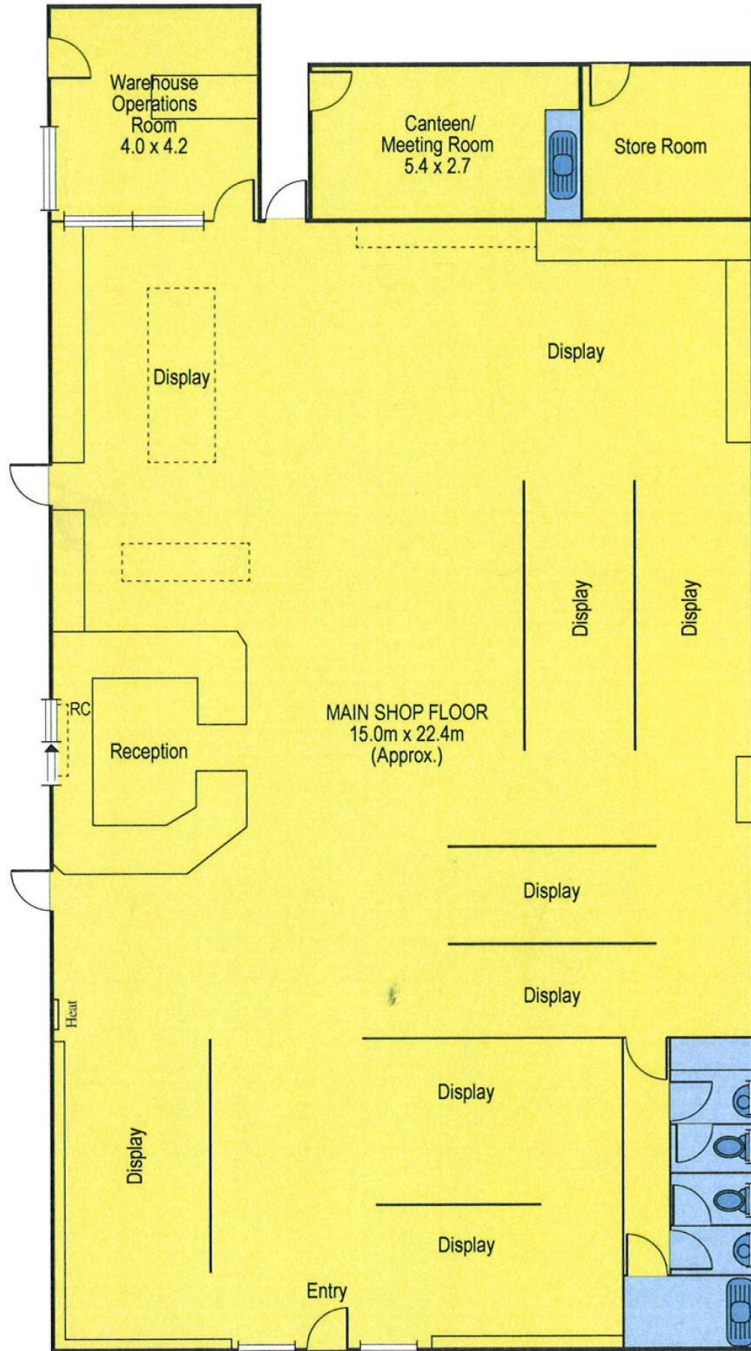
## 178 Marshalltown Road GROVEDALE VIC

- \* Ripe for some transformation with potential plus
- \* Gateway to Residential Growth Corridor and the Surf Coast
- \* Building area approx 1,280m<sup>2</sup> with mezzanine offices
- \* Short term lease in place
- \* Zoned Industrial 1

<b>Type</b>	: Industrial
<b>Building Size</b>	: 1280 sqm
<b>Land Size</b>	: 2008 sqm
<b>View</b>	: <a href="https://www.maxwellcollins.com.au/sale/vic/geelong-district/grovedale/commercial/industrial/7454502">https://www.maxwellcollins.com.au/sale/vic/geelong-district/grovedale/commercial/industrial/7454502</a>



Mezzanine Level - Offices



Ground Floor - Shop



