



3 Speranza Court Marshall VIC

3 2 2

This neatly presented home is situated in the highly sought-after suburb of Marshall; close to the station and is ideal for first-time home buyers, Melbourne commuters and investors. Featuring a fully equipped kitchen with adjacent meals area, a light filled spacious living area, main bedroom with WIR and ensuite, a further two bedrooms both with built in robes and a central bathroom. Outside features a low maintenance garden and a double lock up garage with internal access. Located only a short walk to the train station, schools, shops and easy access to Geelong CBD and Bellarine Peninsula. Currently let at \$420 per week.

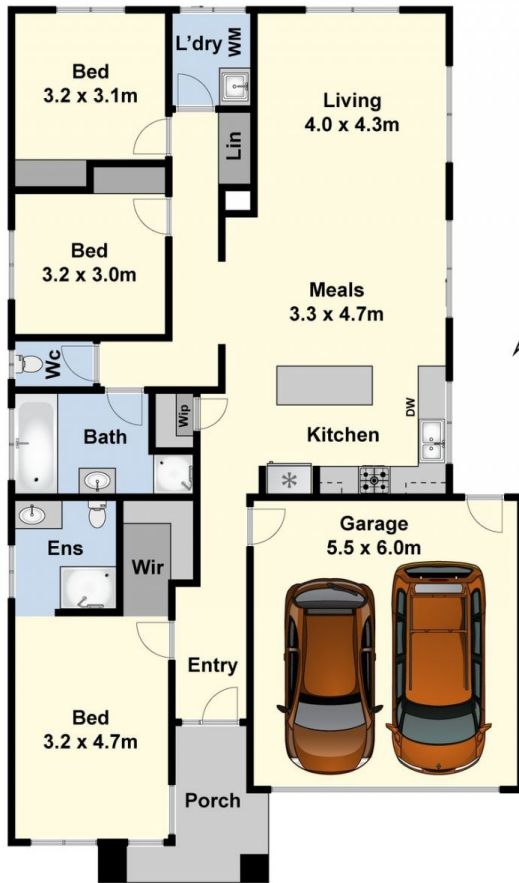
Type : House
Land Size : 368 sqm
View : <https://www.maxwellcollins.com.au/sale/vic/geelong-district/marshall/residential/house/7454370>



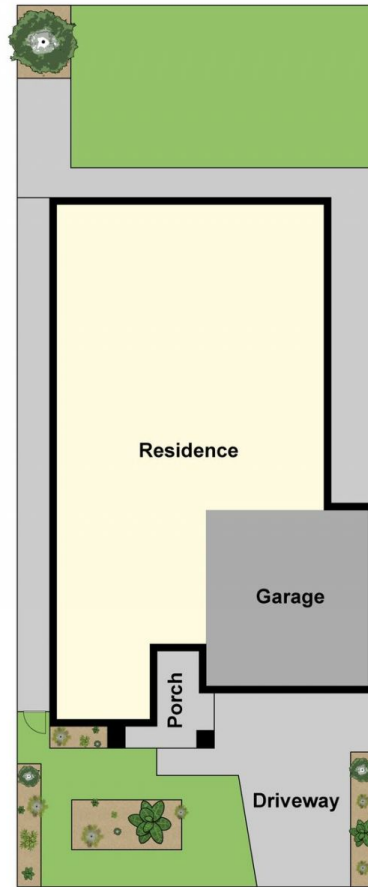
Duncan Skene
03 5222 4711



Laura Vander Noord
03 5222 4711



Ground Floor



Site Plan